



The Connecticut Surveyor

Volume 20, Issue 3

Connecticut Association of Land Surveyors - 78 Beaver Road, Wethersfield, CT 06109

South Central Proprietors Council Director Retires

On April 1, 2015, Bob Jackson will retire from Milone & MacBroom in Cheshire. Bob has served on the CALS Board of Directors, representing the South Central Proprietors Council, for many years. In addition to his commitment to CALS, the land surveying profession, and his job at Milone & MacBroom, Bob has been a wonderful supporter of CALS sharing his expertise in computer software and helping us establish a state-of-the-art back up system at the CALS office.



Back row left-right - Rick Howard, Rick Martel, Ed Ruchin, Angus McDonald, Susan Mattern, Larry Geissler, Mike Garon, Bob Baron, Chris Jiuliano, Wayne Zirolli, & Dave Palmberg.

Front row left-right - Brian Florek, Dean Martin, Reese Roberts, Bob Dahn, Bob Jackson, Adam Hoffman, Jeff McDougal, Jay Ussery, & Jim Rossman.

Bob has been an amazing mentor to his employees, a good comrade to his associates, and a kind and giving friend.

He and his wife will be moving up to their home on Lake Winnepesaukee in New Hampshire.

We wish them both many happy and healthy years of retirement. Hopefully he will come back and see us all at the CALS Annual Meeting in November.



Inside this issue:

National Surveyors Week	3
Legislative Process	4
Testifying at a Public Hearing	5
General Membership Meeting / Obituary	8
Golf Outing / Professional Development	9
Public Land Survey System	12
Classified	15

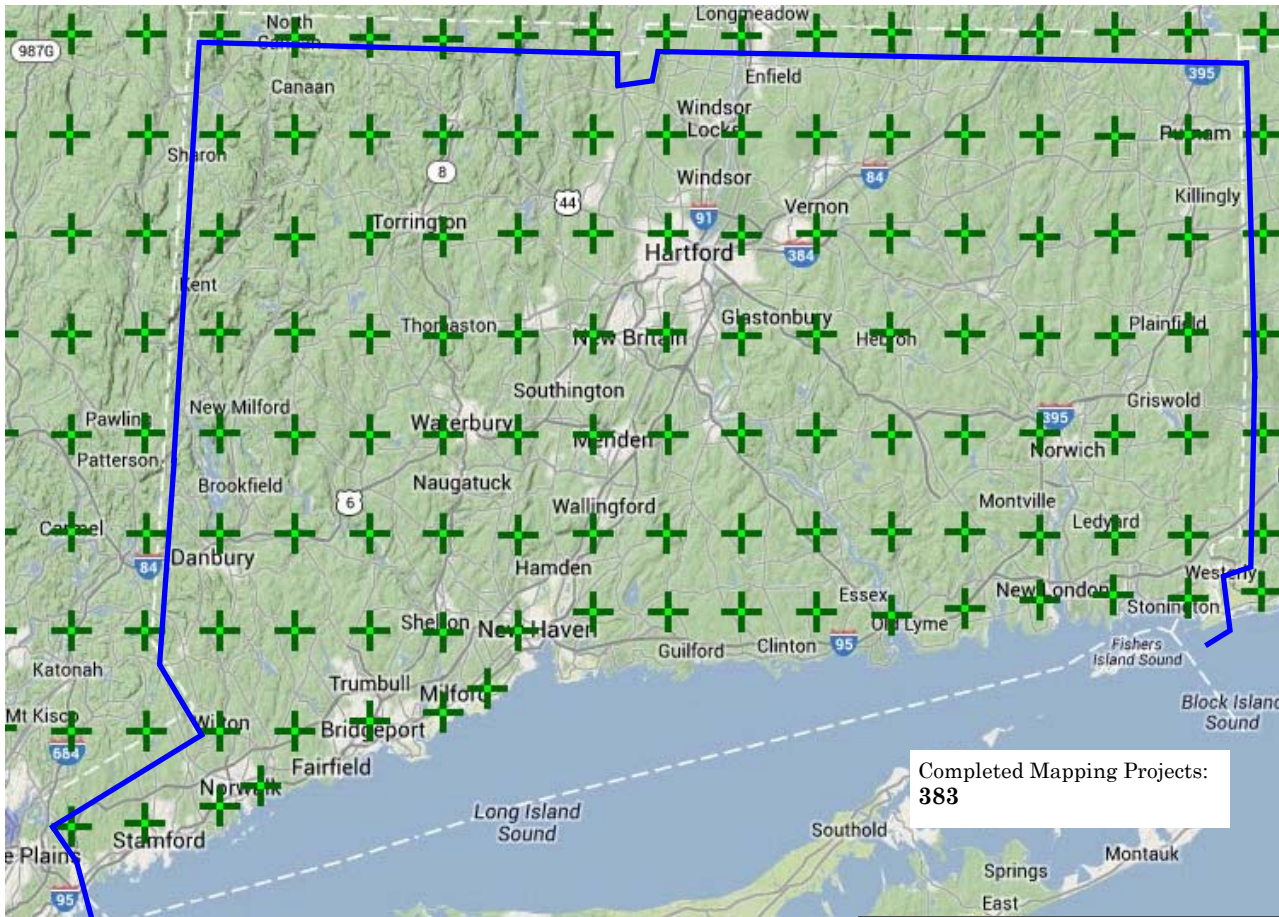
www.ctsurveyors.org

email: kathy@ctsurveyors.org

tele. 860-563-1990

Providing high quality digital topographic mapping - est.1977

www.e-topo.com/map/

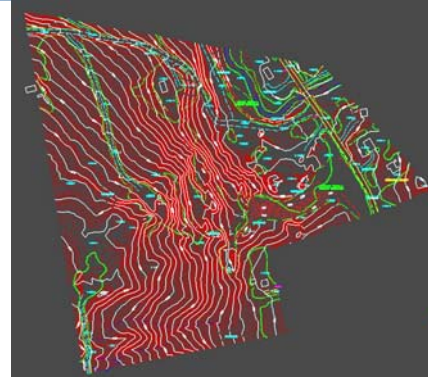


One icon represents 325 photo centers - click icon nearest to area of interest. Continue to select until low resolution aerial image appears. Fast alternative (Top Left) - enter address- hit Go!
All images can be panned, zoomed, and downloaded for free.

LOW ALTITUDE IMAGERY ONLINE

Over 200,000 images - Low resolution scans represent high quality aerial photos captured with a USGS calibrated cartographic camera suitable for detailed engineering level mapping (1"=40'/2' DTM).

Download free imagery or submit a topographic mapping request for proposal (RFP) www.e-topo.com/map/



TIGHT BUDGET?

Every proposal includes our **LOW PRICE GUARANTEE**.
See website for complete details.

SPEC FLIGHTS - NO UPFRONT COST
(15MAR-20APR)



ASPRS



CALS



MSLS



MALSCE



NHLSA



NYSAPLS



RISPLS



VLSL

NATIONAL SURVEYORS WEEK - MARCH 15-21, 2015

NATIONAL GPS DAY - MARCH 25, 2015

National Surveyors Week will be celebrated nationwide March 15-21, according to the National Society of Professional Surveyors (NSPS).

Hundreds of surveyors nationwide are planning activities, such as talks to school groups, contacts with their local news media about the importance of the nation's surveying profession, and booths at popular community locations to describe the importance of the work and role of surveyors and their contributions to society. These activities will enable citizens to look back at the historic contributions of surveying and look ahead to the new technologies that are constantly modernizing the profession.

The message to be spread, according to NSPS, is that the role of the surveyor has been, and remains, of vital importance in the development of the United States.

"As long as property ownership remains one of the pillars of life in America, the role of surveyors will remain vital," says Curt Sumner, executive director of NSPS. "To this day, owning land, America's greatest asset, remains the American dream. Without the knowledge, abilities and guidance of a professional surveyor to determine boundaries this dream largely disappears."

There are over 45,000 professional surveyors in the United States. The value of their work remains vital to the future economic growth of our nation."

For example:

- Hydrographic surveys are important to the use bodies of water;
- Engineering surveys are utilized in the study and selection of engineering construction;
- Geodetic surveys determine precise global positioning for such activities as aircraft and missile navigation;

Cartographic surveys are used for mapping and charting as well as photogrammetry, the science of using aerial photographs for measurement and map production.

GPS Day attracts geocachers and surveyors alike to participate in one of the largest, simultaneous collections of GPS data at sites throughout the United States.

This is our day, GPS fans! We can show off the real-world applications and mainstream capabilities of GPS measurement while we raise awareness for the profession of land surveying.

Land surveyors were among the first adopters of GPS technology, and have used GPS for more than 20 years.

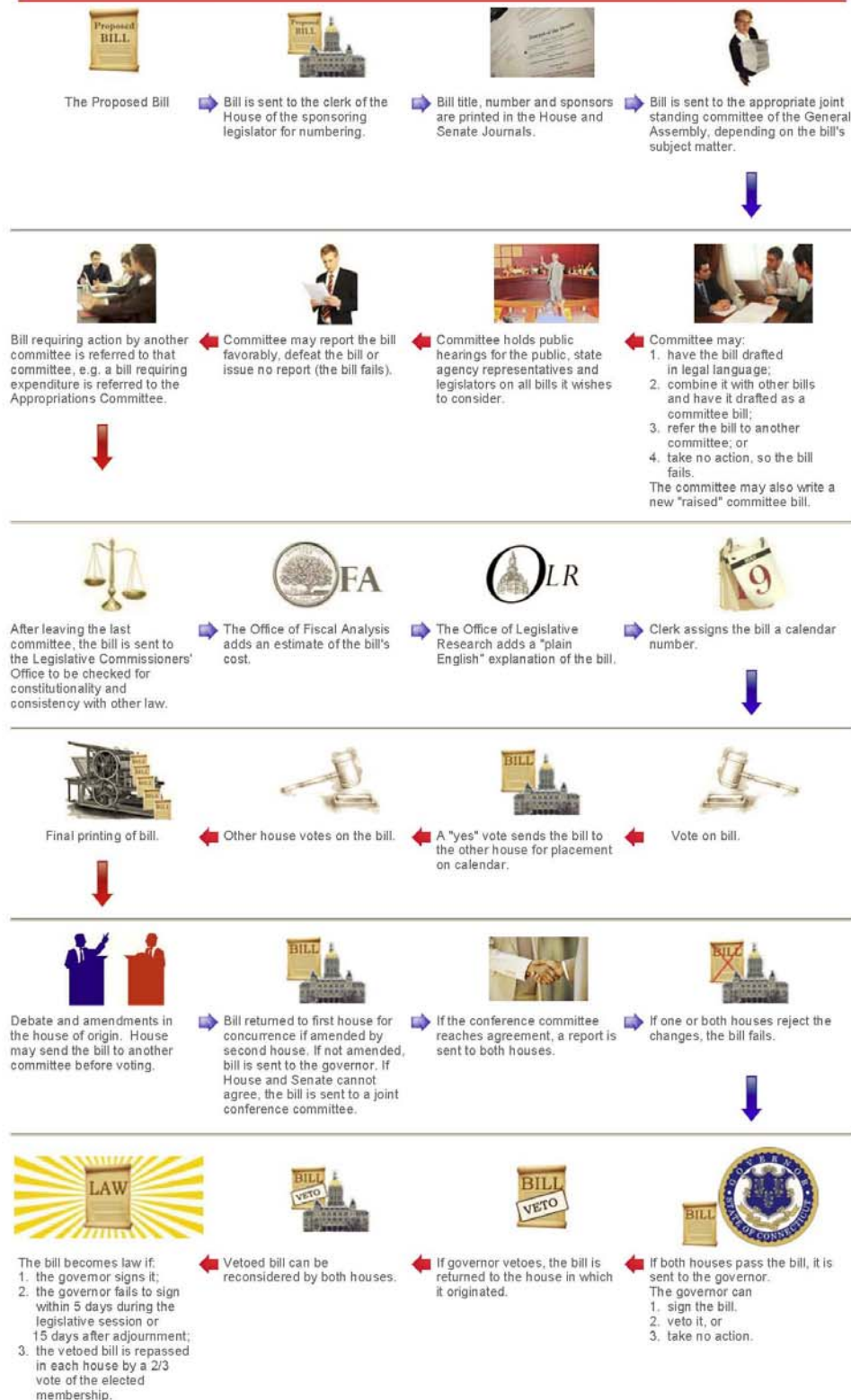
GPS Day is an extension of [National Surveyors Week](#), an initiative focused on key educational achievements and land survey awareness. National Surveyors Week is hosted by the [National Society of Professional Surveyors](#) (NSPS) and state surveying societies across the country.

CALS Sustaining Member Superior Instrument will participate in this event by occupying benchmarks near some of our Base Stations. If anyone would like to participate please contact Mike Jiantonio at mjiantonio@superiornetwork.com to coordinate.



"Success is the sum of small efforts, repeated day in and day out."

How A Bill Becomes A Law In Connecticut



"Success is the sum of small efforts, repeated day in and day out."

Testifying at a Public Hearing

Your Voice Matters at the Connecticut General Assembly

A Guide for Reaching State Legislators and Testifying at Hearings

Your elected state legislators want to know what you think of proposed legislation before they vote on it. You can telephone them or write them letters to express your views. Another effective way of getting your point across is speaking at a public hearing. Here's how:

Getting Ready

It will help to know the number of the bill you're interested in. To find out, call the bill status information room at (860) 240-0555, or call one of the toll-free numbers listed below and ask to be transferred to the Information Room.

The Connecticut General Assembly's internet site (www.cga.ct.gov) will allow you to retrieve the bill status information on the bill you are interested in, including current text, up-to-date actions on the bill, introducer, statement of purpose and co-sponsors.

Plan your remarks so your viewpoint and reasoning will be clear. It may help you to write them out completely. There is no need to provide copies, but if you want to leave written testimony, it's helpful to make enough copies for all members of the committee holding the hearing, with about 10 extras for staff and files. Committee staff cannot make these copies for you. Turn in written testimony before the hearing begins so committee staff can distribute it systematically.

Finding the Hearing Room

Most hearings are held in the Legislative Office Building (LOB), though some are in the Capitol. TV monitors at LOB and Capitol entrances show the locations. A daily bulletin also gives this information and lists all bills scheduled for hearing. You can get a bulletin in the LOB's ground floor bill room during regular sessions or on the General Assembly's internet site (www.cga.ct.gov).

Signing Up

Pick up a copy of the bill from the rack outside the hearing room.

Testifying at a Public Hearing

When You Come To Testify

Read the legislative bulletin for the particular information on the sign-up process, for that day. The sign up sheet has space to print your name legibly, the bill(s) you are speaking on, and sometimes, whether you are for or against the bill. Sign up sheets are usually in place one hour before the hearing.

After signing up, you may be seated in the hearing room, or look around the building until the hearing begins. It is a good idea to read the bill before you speak, to be sure you understand it.

Hearing Procedures

Speaking Order: One of the committee's co-chairpersons will preside over the hearing, setting rules that seem fair for the circumstances and calling speakers from the signup sheets. At many, but not all hearings, the first hour is reserved for legislators and agency heads or invited guests. Remaining speakers are usually called in the order in which their names appear on the signup sheet, although some chairpersons alternate between supporters and opponents of a bill. Chairpersons often ask large groups to appoint a single spokesperson. Some committees hear all testimony on one bill before proceeding to the next, following the agenda printed in the bulletin.

Comings and Goings: Some hearings last for several hours. Legislators may leave and reenter the room if they are scheduled for more than one hearing or meeting. But all testimony is recorded so they can read it later.

Decorum: A hearing is an important step in the process of making law, so it is a formal occasion. Please give your courteous attention to other speakers, regardless of their views. Don't applaud or indicate pleasure or displeasure with anyone's remarks.

Your Turn At The Microphone

When you are called, sit at the speaker's desk. You may begin with "Madam Chair, Mr. Chairman" (as appropriate) "and members of the committee." Introduce yourself very distinctly so the transcriber can understand, and mention your town and the number and title of the bill you'll be speaking on. In addition, most hearings and meetings are covered by Connecticut Network (CT-N) for broadcast over local cable access stations.

Indicate right away whether you support the bill, oppose it, or are offering suggestions to improve it. Then explain your reasoning. Follow this procedure for each bill you discuss.

Keep your remarks short; 3-5 minutes is usually enough, but be sure not to exceed any announced time limits. If other speakers have already made your point, you can say that you agree with, or want to associate yourself with the remarks of one or more previous speakers. Your views and your name will then be clearly on record.

When you finish, remain at the microphone for a moment, in case committee members want to ask questions. Then return to your seat or leave the hearing, as you wish.

“Success is the sum of small efforts, repeated day in and day out.”

Testifying at a Public Hearing

Special Requirements

You can help committee staff plan for comfortable, efficient hearings if you notify them in advance when you intend to bring an unusually large group or a large number of people requiring wheelchair space, or if you need projection equipment. The staff can provide headsets for hearing-impaired people without advance notice.

To Contact Your Legislator

The blue pages of the telephone directory (available for free and found in the League of Women Voters Information Service areas of the LOB and the Capitol) list the home or business numbers of your state representative and senator. You will find them under "Connecticut, State of. State Legislators." The General Assembly maintains several toll-free numbers through which you may be transferred to a legislator or to the bill status information room.

House Democrats	1-800-842-8267
House Democratic Leadership	1-800-842-1902
House Republicans	1-800-842-8270
House Republican Leadership	1-800-842-1423
Senate Democrats	1-800-842-1420
Senate Republicans	1-800-842-1421

To reach a committee office, obtain the number from the League of Women Voters Capitol Information Service (860-240-0222) or ask to be transferred from a toll-free number. If you use a TDD (Telecommunications Device for the Deaf), you can call these numbers:

House Democrats	(860) 240-0160
House Republicans	(860) 240-0161
Senate Democrats	(860) 240-0162
Senate Republicans	(860) 240-0163
Human Services Committee	(860) 240-0164

The senator or representative can also be contacted via email from the appropriate caucus website:

House of Representatives	http://www.cga.ct.gov/asp/menu/House.asp
Senate	http://www.cga.ct.gov/asp/menu/Senate.asp



“Success is the sum of small efforts, repeated day in and day out.”

Attorney Kevin Reynolds to speak at the
CALS General Membership Meeting in May

The Reynolds Strategy Group has done an outstanding job of monitoring all legislation that may have an impact on land surveyors, for many years. Principal Kevin Reynolds will be the keynote speaker at the General Membership Meeting on May 7, 2015. CALS 2nd Vice President Angus McDonald, Jr. is putting the final touches on what will be a very informative and timely presentation.

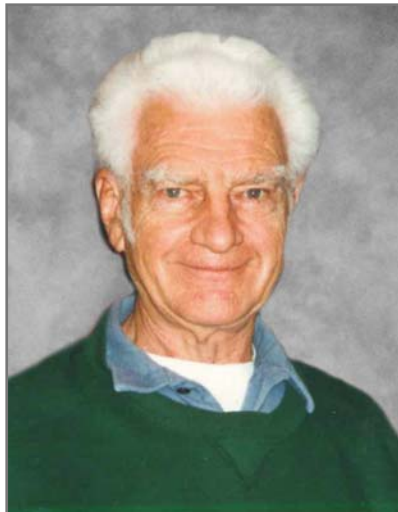


With our proposed bill SB 996, An Act Concerning Licensing for Professional Engineers & Land Surveyors, to modify or eliminate nondegree paths to licensure for professional engineers and land surveyors, adopt continuing education requirements and revise penalties for violations of related licensing laws, currently on the floor, this is a meeting that you will not want to miss!

Look for a brochure, with details, in the near future!



CALS Charter Member Russ Andres Dies



Russell Schlayer Andres, 93, of Southington, passed away at his home surrounded by his loving family on Friday, February 27, 2015. He had been the loving husband of Barbara (Fitzpatrick) Andres for 63 years.

Born in New Britain on February 9, 1922 to the late Roland and Wilhelmina (Schlayer) Andres, he had been a longtime Southington resident.

Russell proudly served his country in the U.S. Navy during WWII in the South Pacific. He was a self-employed land surveyor/civil engineer for four decades and was a charter member of the Connecticut Association of Land Surveyors. He was a loving family man, friend, neighbor, and avid naturalist.

In addition to his wife Barbara, Russell is survived by his two daughters; Wendy L. Andres of Morrisville, VT, and Patricia L. Andres of Weston, MA and a son William S. Andres and his wife Karen of Southington; 8 grandchildren: David Andres, Kristina Andres, Amara Andres, Lindsey Hildebrand, Kerry Hildebrand, Mikael Andres, Ben Andres and Katy Andres and one great-granddaughter, Olivia Walton. He also leaves behind his sister Shirley Doerfler of Southington and several nieces and nephews and great, and great-great nieces and nephews.

In lieu of flowers, donations in Russell's memory may be made to a charity of the donor's choice.



“Success is the sum of small efforts, repeated day in and day out.”

CALS 2015 Golf Outing to be held at Timberlin Golf Club in Berlin, CT



It's not too early to start thinking "Spring" and enjoying the outdoors!

This year CALS has scheduled a great outing at Timberlin Golf Club in Berlin CT on Wednesday, June 24th.

Centrally located, this will give our golfing members a chance to try a new course and enjoy the day outside with your friends and associates.

Mark your calendar and look for a brochure coming soon!



Professional Development

"Connecticut Town Boundaries"

Moderated by John Doody, PS&PE

The history, research resources and case studies of town boundaries.

Thursday, March 19, 2015,

8:30am-3:30pm

ITBD CCSU, New Britain, CT

Cost \$200



"Success is the sum of small efforts, repeated day in and day out."

Future Surveyor???



Lisa & Bob Dahn are proud to announce the birth of their first grandson, Ike Robert McGrath, 7lbs, 15 oz. was born the beginning of March.

Mom and son are both doing well and grandparents are ecstatic!

CALS Auxiliary

CALS “First Lady” Joan McGill recently accompanied her husband Jeff McDougal, CALS president, to the NYSPLS Annual Meeting and found that she enjoyed the presentations as much as he did! NYSPLS has an active auxiliary that is totally committed to raising money, providing interesting and informative seminars, and sponsoring future surveying students.

Ms. McGill wondered why doesn’t CALS have such a program? She contacted Kathy at the CALS office and together they hope to establish a similar program where those of us who are not surveyors, can volunteer and support the efforts of CALS, thus enhancing all that the association has to offer.

We hope to kick off this endeavor at the annual meeting in November by offering alternative activities for those who attend the conference.




Remember:

- **Volunteers Gain New Experiences and Insights**
- **Volunteers Give Back and Helping Others**
- **Volunteers Create Connections with People**
- **Volunteers Create A Sense of Accomplishment**
- **Volunteers Help Build Career Goals**

Please call Kathy at the CALS office if you or someone you know would like to become involved with CALS. Please pass this on to your spouse/partner. Thank you.



“Success is the sum of small efforts, repeated day in and day out.”



Get that whole
it's good having a
plan feeling.

Knowing that you have a plan for retirement feels good.

Entering into retirement with a sound action plan may give you the comfort to live your life with a little less worry. Incorporating products like **whole life insurance** (an income tax-free death benefit and asset with tax-advantaged distributions*) and **annuities** (selection of lifetime income options) as part of your plan may give you enough reason to kick back and rest easy.

You can feel confident working with MW Financial Group, Ltd.. As a Guardian Agency, we share the same high standards for excellence that Guardian has held for over 150 years. We do the right thing. We put the right team in place. And, we provide the right approach, focusing our energy on long-term relationships versus short-term solutions.

Get back to life. Visit john_carbone@mwfinancial.com, or call John L Carbone at 203.606.0829 for more information about whole life insurance products and annuity products.

MW Financial Group, Ltd.
is an agency of:  **GUARDIAN**

Whole life insurance products are issued by The Guardian Life Insurance Company of America (Guardian), New York, NY.

* Long-term cash value comes mainly from dividends. Dividends are not guaranteed. They are declared annually by Guardian's Board of Directors.

Annuity products are issued by The Guardian Insurance & Annuity Company, Inc. (GIAC), New York, NY. GIAC is a wholly owned subsidiary of Guardian. Contract guarantees are guaranteed solely by the claims-paying ability of GIAC, not Guardian.

Registered Representative of Park Avenue Securities LLC (PAS) . Securities products and services are offered through PAS, Financial Representative, The Guardian Life Insurance Company of America, New York, NY (Guardian). PAS is an indirect, wholly owned subsidiary of Guardian. This firm is not an affiliate or subsidiary of PAS or Guardian.
[PAS is a member FINRA, SIPC]

John L Carbone, • MW Financial Group, Ltd. • 197 Scott Swamp Road, • Farmington, CT 06032 •

EB-016877 (12/13)
2013-13255

The Public Land Survey System (PLSS)

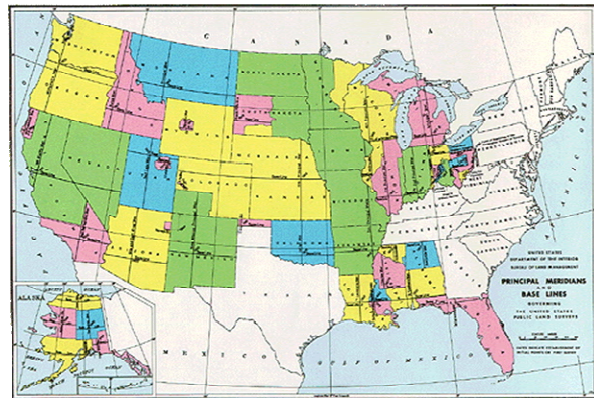
The Public Land Survey System (PLSS) is a way of subdividing and describing land in the United States. All lands in the public domain are subject to subdivision by this rectangular system of surveys, which is regulated by the U.S. Department of the Interior, [Bureau of Land Management](#) (BLM).



National Atlas of the United States® The PLSS is used to divide public domain lands, which are lands owned by the Federal government for the benefit of the citizens of the United States. The original public domain included the land ceded to the Federal Government by the thirteen original States, supplemented with acquisitions from native Indians and foreign powers. It encompasses major portions of the land area of 30 southern and western States. Since the original PLSS surveys were completed, much of the land that was originally part of the public domain has been transferred to private ownership and in some areas the PLSS has been extended, following similar rules of division, into non-public domain areas. PLSS rules of division are explained below. For areas that were once part of the public domain, legal land descriptions are usually written in terms of PLSS descriptions.

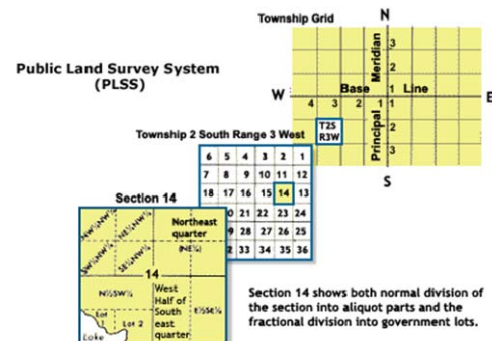
The PLSS typically divides land into 6-mile-square townships, which is the level of information included in the National Atlas. Townships are subdivided into 36 one-mile-square sections. Sections can be further subdivided into quarter sections, quarter-quarter sections, or irregular government lots. Normally, a permanent monument, or marker, is placed at each section corner. Monuments are also placed at quarter-section corners and at other important points, such as the corners of government lots. Today permanent monuments are usually inscribed tablets set on iron rods or in concrete. The original PLSS surveys were often marked by wooden stakes or posts, marked trees, pits, or piles of rock, or other less-permanent markers.

The PLSS actually consists of a series of separate surveys. Most PLSS surveys begin at an initial point, and townships are surveyed north, south, east, and west from that point. The north-south line that runs through the initial point is a true meridian and is called the Principal Meridian. There are 37 Principal Meridians, each is named, and these names are used to distinguish the various surveys. The east-west line that runs through the initial point is called a base line. This line is perpendicular to the Principal Meridian.



Source: Principal Meridians and Base Lines, Bureau of Land Management

Each township is identified with a township and range designation. Township designations indicate the location north or south of the baseline, and range designations indicate the location east or west of the Principal Meridian. For example, a township might be identified as Township 7 North, Range 2 West, which would mean that it was in the 7th tier of townships north of a baseline, and in the 2nd column of townships west of a principal meridian. A legal land description of a section includes the State, Principal Meridian name, Township and Range designations with directions, and the section number: Nebraska, Sixth Principal Meridian T7N, R2W, sec5.



“Success is the sum of small efforts, repeated day in and day out.”

The Public Land Survey System (PLSS) continued...

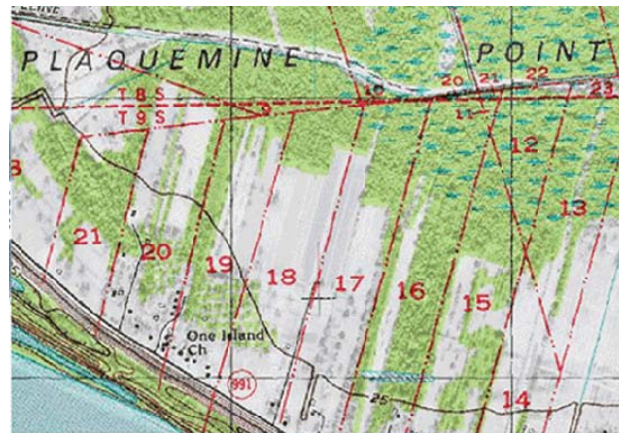
While the original PLSS surveys were supposed to conform to official procedures, some errors were made due either to honest mistakes or to fraudulent surveys. Existing surveys are considered authoritative, and any new surveys must work from existing corners and surveys, in spite of errors in the original surveys and variations from the ideal. This sometimes results in sections that are far from square, or that contain well over or under 640 acres.

The early surveys in Ohio and Indiana were done when the system currently in use had not yet been fully developed. While these surveys have townships that are 6 miles square, the numbering system used and the types of starting points for the surveys are different from those used elsewhere in the United States. These surveys are also named, although the names are not based on Principal Meridians. Further information on these irregular surveys can be found in the references listed at the end of this article. In particular, see the [Background Information on the Public Land Survey System](#).



Source: Principal Meridians and Base Lines, Bureau of Land Management

In Louisiana, parcels of land known as arpent sections or French arpent land grants also pre-date the PLSS, but are treated as PLSS sections. An arpent is a French measurement of approximately 192 feet, and a square arpent (also referred to as an arpent) is about 0.84 acres. French arpent land divisions are long narrow parcels of land usually found along the navigable streams of southern Louisiana, and also found along major waterways in other areas. This system of land subdivision was begun by French settlers in the 1700s, according to typical French practice at the time and was continued by both the Spanish and by the American government after the acquisition of the Louisiana Purchase. A typical French arpent land division is 2 to 4 arpents wide along the river by 40 to 60 arpents deep, while the Spanish arpent land divisions tend to be 6 to 8 arpents wide by 40 arpents deep. This method of land division provided each land-owner with river frontage as well as land suitable for cultivation and habitation. These areas are given numbers just like standard sections, although the section numbers frequently exceed the normal upper limit of 36.



French arpent land division influence in Louisiana.
Source: U.S. Geological Survey

“Success is the sum of small efforts, repeated day in and day out.”

The Public Land Survey System (PLSS) continued...

History

Originally proposed by Thomas Jefferson, the PLSS began shortly after the Revolutionary War, when the Federal government became responsible for large areas west of the thirteen original colonies. The government wished both to distribute land to Revolutionary War soldiers in reward for their service, as well as to sell land as a way of raising money for the nation. Before this could happen, the land needed to be surveyed.

The [Land Ordinance of 1785](#) which provided for the systematic survey and monumentation of public domain lands, and the [Northwest Ordinance of 1787](#) which established a rectangular survey system designed to facilitate the transfer of Federal lands to private citizens, were the beginning of the PLSS. Under Congressional mandate, cadastral surveys (surveys of the boundaries of land parcels) of public lands were undertaken to create parcels suitable for disposal by the Government. The extension of the rectangular system of surveys over the public domain has been in progress since 1785, and, where it applies, the PLSS forms the basis for land transfers and ownership today. The [Manual of Instructions for the Survey of the Public Lands Of The United States, 1973](#) documents current official procedures for PLSS surveys.

Certain lands were excluded from the public domain and were not subject to survey and disposal. These lands include the beds of navigable bodies of water, national installations such as military reservations and national parks, and areas such as land grants that had already passed to private ownership prior to subdivision by the Government. France, Spain, and Mexico all conferred land grants in territory they claimed; many of these grants were confirmed by the U.S Government when the territory in which they were situated was acquired by the United States, and the land was then excluded from the public domain.

Over the past two centuries, almost 1.5 billion acres have been surveyed into townships and sections. The BLM is the Federal Government's official record keeper for over 200 years' worth of cadastral survey records and plats. In addition, BLM is still completing numerous new surveys each year, mostly in Alaska, as well as conducting resurveys to restore obliterated or lost original survey corners.

Commonly Used Terms

Aliquot part—The standard subdivisions of a section, such as a half section, quarter section, or quarter-quarter section.

Base line—A parallel of latitude, or approximately a parallel of latitude, running through an arbitrary point chosen as the starting point for all sectionalized land within a given area.

Cadastral—Having to do with the boundaries of land parcels.

Government lot—A subpart of a section which is not described as an aliquot part of the section, but which is designated by number, for example, Lot 3. A lot may be regular or irregular in shape, and its acreage may vary from that of regular aliquot parts. These lots frequently border water areas excluded from the PLSS.

Initial point—The starting point for a survey.

Land Grant—A land grant is an area of land to which title was conferred by a predecessor government and confirmed by the U.S Government after the territory in which it is situated was acquired by the United States. These lands were never part of the original public domain and were not subject to subdivision by the PLSS.

Principal meridian—A meridian line running through an arbitrary point chosen as a starting point for all sectionalized land within a given area.

Public domain—Land owned by the Federal government for the benefit of the citizens. The original public domain included the lands that were turned over to the Federal Government by the Colonial States and the areas acquired later from the native Indians or foreign powers. Sometimes used interchangeably with Public lands.

Public lands—Lands in public ownership, therefore owned by the Federal government. Sometimes used interchangeably with Public domain.

Range—A vertical column of townships in the PLSS. **Section**—A one-square-mile block of land, containing 640 acres, or approximately one thirty-sixth of a township. Due to the curvature of the Earth, sections may occasionally be slightly smaller than one square mile.

Township—An approximately 36-mile square area of land, containing 36 sections. Also, a horizontal row of townships in the PLSS.



Classified

Fairfield County

- **Survey/Field Technicians** to join the Redniss & Mead Team of Land Surveying, Civil Engineering, and Land-Use Planning professionals in a growing firm located in Fairfield County, CT. Candidates should have 3+ years experience in the surveying field and experience in the processing and preparation of all types of surveys, including boundary surveys, topographic surveys and construction layout. Knowledge of AutoCAD and Data Collection is required. Responsibilities include performing fieldwork, processing and mapping of fieldwork, coordination with clients and in-house staff. Work for this position will be on a variety of project types including residential, commercial and institutional. For consideration, please forward your resume to Lawrence W. Posson, PLS, Director of Surveying: L.Posson@rednissmead.com. We are an Equal Opportunity Employer and offer a competitive compensation package including salary, medical benefits, paid vacation, paid holidays, performance bonuses, 401K retirement plan, direct deposit, and a health club membership.

Pereira Engineering, LLC is an established Civil/Environmental/Land Surveying firm located in Shelton, CT and we are looking to fill the following positions as of January 2015:

- **Instrument man/survey technician:** We are seeking an experienced Instrument Man / Survey Technician with a minimum of five (5) years experience in all facets of land surveying from boundary surveying to construction layout. The qualified candidate must be highly-motivated and detail-oriented and must be familiar with Trimble Instruments, Trimble Data Collectors, and GNSS systems. AutoCAD Civil 3D experience a real plus! Duties include field surveying, downloading/uploading survey data, land record research, and AutoCAD drafting.
- **Civil Engineer:** We are seeking a Civil/Site Engineer experienced in various types of site development projects including residential, commercial, and municipal projects. Responsibilities include the design of site layouts, subdivisions, septic systems, storm and sanitary sewers, stormwater management systems, grading, roads, and hydrologic/hydraulic studies. Duties will include preparation of plans, specifications, and calculations as well as coordination with other design professionals and public officials. Qualified candidate must have a B.S. in Civil Engineering from an accredited engineering program and must be proficient with AutoCAD Civil 3D and other commonly used design and drainage analysis software. Candidate must also be organized, highly-motivated, and detail-oriented.

Pereira Engineering offers a very competitive salary and benefits package including Major Medical Insurance, 401(k) Profit Sharing Plan, Life Insurance including Short-Term Disability and AD&D coverage, paid Vacation, Holidays, Sick Days, and Direct Deposit for payroll.

Please email resume and salary requirements to: joe.pereira@pereiraeng.com or fax to: (203) 944-9945.

- **CAD Technician** with Land Surveying Experience.
Full time for Civil Engineering/Surveying company located in Greenwich, CT.
Preferred 5 years experience. Excellent salary and benefits.
For more information contact risoli@optonline.net.

“Success is the sum of small efforts, repeated day in and day out.”

Classified

Hartford County

BSC Group - Join our dynamic group of Professional Surveyors, Landscape Architects, Engineers and Environmental Scientists with offices in Glastonbury, Connecticut and several Massachusetts locations including Boston, Worcester and Cape Cod. BSC Group is celebrating its 50th year anniversary with roots founded in Land Surveying and with our sight set on the future. We utilize current technologies, monitor futuristic techniques and encourage creative productivity. The company is currently in search of talented Surveyors to support on-going projects and meet our expected growth in the public and private sectors. We currently have several full time **Land Surveying** positions available in both CT and MA offices. BSC Group offers a comprehensive salary and benefit package including vacation and sick time, medical, dental, 401(k), life and disability insurance. All levels of experience are encouraged to apply.

- **Professional Land Surveyor** –Requires a broad range of skills necessary to support public and private clients, as well as to provide support to in-house civil engineering staff. Requires a BS degree with licenses in MA or CT with at least five years of supervisory experience in land title surveys, topographic/existing condition surveys, boundary surveys and subdivision work, and the ability to perform land record research of complex title histories. Project management and business development skills are highly desirable. Familiarity with the use of field equipment including conventional, robotic total stations, GPS with field to finish techniques utilizing Civil 3D and/or Carlson is desired.
- **Survey Specialist** – . Full-time position to collect survey data, perform research, calculations, develop land information databases and generate survey plans utilizing field to finish techniques utilizing Civil 3D and or Carlson is desired. Assists managers with client proposals. Requires BS degree with a minimum 4 years of experience, good client relations skills and effective communication skills. LSIT is preferred.
- **Survey Party Chief** – requires excellent knowledge of field to finish survey techniques using total station and leveling equipment. Knowledge of GPS data collection is desirable. Responsibilities include performing existing condition/topographic surveys, boundary surveys, and construction staking. A minimum of 5-6 years of field experience, valid driver's license with clean driving record, and excellent math skills. Associate's or Bachelor's degree a plus.
- **Survey Technician/Instrument Operator** – Must have a minimum of 2 years' experience using total station & electronic data collector. Experience with Carlson and Civil 3D is a plus. Candidates must have high school diploma, valid driver's license with clean driving record, and good math skills.

Please submit resume with cover letter in confidence to: Human Resources Department, BSC Group, Inc., 15 Elkins Street, Boston, MA 02127; e-mail: info@bscgroup.com; fax: 617-896-4301.

No telephone calls, no recruiters, please.

- **Party Chief**-Martin Surveying Associates, LLC is a growing firm located in New Britain, Connecticut is seeking a party chief with the following qualifications:
 - 5+ years of experience in the role of a Party Chief.
 - Ability to perform and work as a one-person crew utilizing robotic total stations and GPS equipment.
 - Experienced in ALTA/ASCM Surveys, boundary surveys, topographic surveys and construction layout on large commercial projects.

AutoCAD experience a plus.

Please send Resume to: Martin Surveying Associates, LLC, 321 Ellis Street, New Britain, CT 06051
martinsurveying148@yahoo.com

“Success is the sum of small efforts, repeated day in and day out.”

Classified

New Haven County

- **Survey Field Technician** - Milone & MacBroom, Inc. is a growing multidisciplinary engineering, planning, landscape architecture, and environmental science consulting firm. Our corporate office is located in Cheshire, Connecticut with satellite office locations in Maine; New York; South Carolina; Massachusetts; and Vermont. We are looking for talented Survey Field Technicians (Rod Person) to join our Survey team and perform field boundary, topographic and construction surveys for various projects in the New England area. The candidates should have zero to two years experience in land survey field work, knowledge of field instruments and proficient computer skills required. College degree and CAD experience preferred. Excellent oral and written communicative skills required. All candidates should have a strong work ethic, enjoy working outdoors in a technical capacity, working individually or in a team, willing and eager to learn, and looking to take on more responsibility.
- **Survey Party Chief** to join our Survey department and work on a wide variety of land surveying projects. The qualified candidate should have three or more years field experience, knowledge of field instruments and proficient computer skills required. College degree and CAD experience preferred. Excellent oral and written communicative skills required. He/she should have a strong work ethic, enjoy working outdoors in a technical capacity, working individually or in a team, willing and eager to learn, and looking to take on more responsibility.

We offer a competitive salary, opportunity for advancement, a comprehensive benefits package, and a flexible and positive work environment. Our success depends on attracting the best talent and continuously striving to improve what we do and how we do it. There are no barriers to where your talent can lead you.

Interested applicants may submit their resume to: Pamela Harris, Human Resources Manager Milone & MacBroom, Inc. 99 Realty Drive, Cheshire, CT 06410 pamh@miloneandmacbroom.com (203) 271-1773
Milone & MacBroom, Inc. is an Affirmative Action/Equal Opportunity Employer M/F/D/V

Looking for Position -

- CALS member with BS degree from Southern CT State College.
- Extensive experience as a Senior Survey Technician.
- Located in New Haven County.
- Willing to travel.
- References upon request.

Call the CALS office for more information. Refer to #2014-10

Available this summer -

Jay Doody is teaching Introduction to GPS in the Civil Engineering Department at CCSU. He has 9 seniors, 8 juniors and 8 sophomores, many of whom will be looking for jobs after graduation or summer positions. All the students have taken a surveying course and are now taking GPS. If you are looking to hire new engineers or surveyors permanently or for the summer please contact, Jay Doody jjdoody@snet.net, 203-933-3850.

“Success is the sum of small efforts, repeated day in and day out.”

March 2015

Sun	Mon	Tue	Wed	Thu	Fri	Sat
1	2	3	4	5	6 MALSCE Annual Meeting	7 MALSCE Annual Meeting
8 Daylight Savings Time 	9	10	11	12	13	14
15 National Surveyors Week	16 National Surveyors Week	17 National Surveyors Week 	18 National Surveyors Week	19 National Surveyors Week Connecticut Boundaries Seminar	20 National Surveyors Week	21 GPS Day National Surveyors Week
22	23	24	25	26 CALs BOD Meeting	27	28
29	30	31				

KEYSTONE PRECISION INSTRUMENTS

Over 25 years meeting the needs of the Survey Industry, Keystone Precision provides the very best in supplies, instrumentation, training and service. We're dedicated to meeting your needs in a professional and timely manner.

We staff each of our five offices with qualified sales and service experts to meet all your requirements.

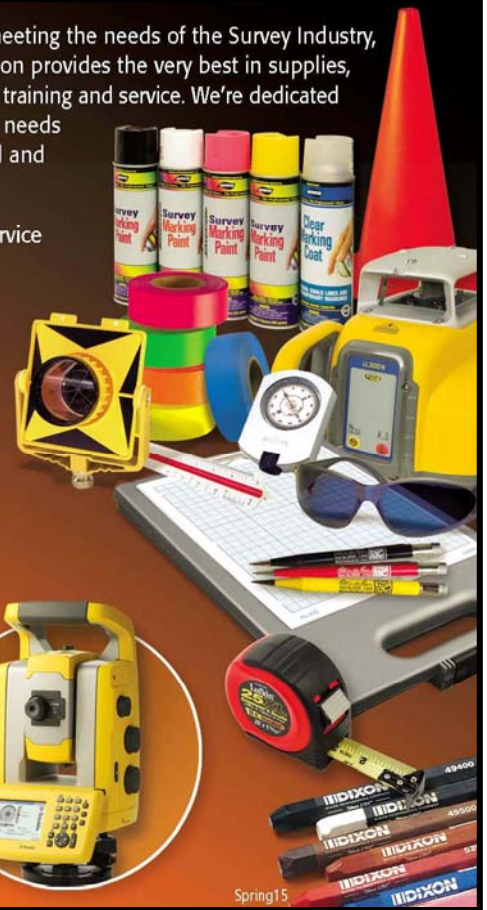
Contact us today and we will see that your needs are met!
Call us at **888-443-9840** or visit us at **www.keypre.com**
and ask for or download our 2015 catalog!

New England Office:

455 Fortune Boulevard
Unit 3
Milford, MA 01757
PH: 888-443-9840
FX: 508-478-4200

Offices also in:

Allentown, PA
Towanda, PA
Crofton, MD
East Syracuse, NY



Spring15

CALS 2015 Directory of Firm Members will be mailed to all Town Clerks and Directors of Public Works throughout the State in April.

If you are not currently a Firm Member, this is your best opportunity to be included in this publication.

All Firm Members must have their 2015 membership dues paid to be included.

Bob Baron, Manager of Survey Operations for the Connecticut Department of Transportation, has advised CALS that Pascone Place / DOT Engineering Records, is open by appointment only - Monday through Friday. Please call 860-665-0688 to schedule an appointment.



PLEASE SUPPORT YOUR SUSTAINING MEMBERS

**BEARINGSTAR
INSURANCE GROUP**
Home, Auto & Other
Personal Insurance Needs
Avon, CT

Evan Cooper - 800-300-4180
evan.cooper@bearingstar.com

BERNTSEN INTERNATIONAL
Survey Markers & Monuments
Madison, WI
Tim Klaben-800-356-7388
tklaben@berntsen.com

BUNCE INDUSTRIES, LLC
Surveying Instruments
& Supplies
Newington, CT
Paul Morin - 860-388-9008
pmorin@bunce.com

CAMILLERI & CLARKE
An Affiliate of SMITH
BROTHERS INSURANCE
Glastonbury, CT
Robert D. Camilleri - 860-430-3306
rcamilleri@camillericlarke.com

CARLSON SOFTWARE
Surveying Software
Agawam, MA
John O'Brien - 800-283-0023
www.carlsonsw.com
jobrien@carlsonsw.com

DESIGN PRODUCTS, CO.
Engineering Equipment
& Supplies
Newington, CT
Tim Lagosh - 860-666-8573
tim@dpcct.com

EASTERN TOPOGRAPHICS
Aerial Photogrammetry Services
Wolfeboro, NH
Wayne Kelloway - 603-569-2400
wkelloway@e-topo.com

FENNER & ESLER AGENCY
Professional Liability for
Engineers & Surveyors
Oradell, NJ
Timothy P. Esler - 201-262-1200
tpesler@gmail.com

**GEOMAPS
INTERNATIONAL**
Aerial Photogrammetry Services
Bethpage, NY
William Crawbuck - 516-827-9100
billc@geomapsintl.com

**GOLDEN AERIAL
SURVEYS**
Aerial Photogrammetry
Services
Newtown, CT
Lenny Johnson - 203-426-3322
lgjohnson@goldenaerialsurveys.com

**KEYSTONE PRECISION
INSTRUMENTS**
Surveying Instruments
& Supplies
Eric Beiler, CT Sales Rep. -
860-558-5700
ebieler@keypre.com
Paul Carver, Manager - 888-443-9840

MAINE TECHNICAL SOURCE
Surveying Instruments
& Supplies
Woburn, MA
Mike Gage - 800-322-5003
mgage@maintechnical.com

MW FINANCIAL GROUP
Long Term Care
& Disability
Farmington, CT
John Carbone - 860-677-2600 x129
john_carbone@mwfinancial.com

**REYNOLDS STRATEGY
GROUP**
Counselors at Law
West Hartford, CT
Kevin Reynolds - 860-308-2388
kreynolds@rsgllc.com

SUPERIOR INSTRUMENT
Surveying Instruments
& Supplies
Milldale, CT
Mike Jiantonio - 888-852-7377
mjiantonio@superiornetwork.com

TRIMBLE
Surveying Equipment
Westminster, CO
Kelly Liberi
www.trimble.com
Kelly_liberi@trimble.com

WADDELL & REED
Financial Services
Manchester, CT
Matt Peak - 860-432-8111
peak@wradvisors.com

WSP GROUP
Multidisciplinary
Engineering Services
Ted Covill - 508-248-1970
www.wspgroup.com
ted.covill@wspgroup.com