



The Connecticut Surveyor

August 2015

Volume 20, Issue 8

Connecticut Association of Land Surveyors
78 Beaver Road, Wethersfield, CT 06109



Adverse Possession in Connecticut

Surveyor and legal expert **Kris Kline** will teach a comprehensive first-time-ever course on **Adverse Possession and other forms of Unwritten Rights in Connecticut**. This unprecedented tutorial will cover important information that all land surveyors need to know. Specific topics include: Adverse claims against the state; the effect of a survey on adverse claims; Claims of Submerged lands; The Lost Grant Theory; Acquiescence; Boundary by Estoppel. Contrasts will be pointed out between Connecticut and other nearby states. Although all surveyors should be familiar with this complex area of law, no Connecticut-specific course has ever been offered.

Please don't miss this important
one-time-only opportunity.

Friday, September 11, 2015

ITBD CCSU, New Britain, CT

Registration is \$230 and limited to CALS
members and members of other state
surveying societies only.

Inside this issue:

CALS Annual Meeting	2
Professional Development	4
Support Hobbs Team	5
How I spent my vacation	6
Surveyors Rendezvous CAL S Auxiliary	8
Creatures to be aware of	9
Deer Ticks	10
Yellowstone National Park	12
Classified	14

www.ctsurveyors.org

email: kathy@ctsurveyors.org

tele. 860-563-1990



Gary Kent to Speak on the Judicial Role of Surveyors at the Annual Meeting on November 6, 2015

Mark your calendar so that you don't miss this opportunity to attend a very informative presentation given by a Nationally recognized speaker as well as several other great presenters.

The keynote speaker at the CALS 48th Annual Meeting will be Gary Kent. Mr. Kent is Director of Surveying at The Schneider Corporation, a 42-year-old consulting firm based in Indianapolis providing solutions in surveying, GIS, 3D graphics, architecture, and civil, municipal and transportation engineering. A past-president of both ACSM and the Indiana Society of Professional Land Surveyors, Gary has a BS degree in Land Surveying from Purdue University and is registered to practice surveying in Indiana and Michigan. He is chair of both the NSPS/ACSM committee and the ALTA committee on the ALTA/ACSM Standards. He currently sits on the Indiana State Board of Registration for Land Surveyors and is also a member of the adjunct faculty at the Purdue campus in Indianapolis where he teaches Land Survey Systems, Legal Descriptions, Boundary Law and Property Surveying.

Other guest speakers will include:

- Jim O'Shea, Executive Business Coach - Achievement Unlimited of Connecticut
- Kari Olson, law firm of Murtha-Cullina - Customer Service
- John Carbone, MW Financial - Business Protection, Succession & Survival
- John Doody, L.S., P.E. - Professional Development



CALS Annual Meeting

Time is flying by and before you know it the 2015 Annual Meeting will be here on November 6, 2015.

Once again we will hold the convention at Saint Clements Castle in Portland, CT.

So many of our members want to contribute to the annual auction but never know what to buy. CALS Secretary Susan Mattern has come up with a fabulous idea that will not only raise funds for CALS, but will be fun and easy for everyone!

THEME BASKETS!

You pick the theme and you decide how much you want to spend, and that is it - we will put a professional looking basket together. Who knows, you might even buy a basket for a Christmas gift!

Some inventive suggestions are:

- Micro Beer
- Nip Assortment
- Tex Mex
- Thanksgiving
- Christmas
- Games
- Jerky/Woodsman
- Craft Beer
- Victoria's Secret - Taken
- Chocolate
- Breakfast
- Picnic
- Champagne
- Elegant Snacks
- Crackers & Cheese
- DVD's
- Italian
- Outdoor Adventure
- Tailgating
- Travel
- Fishing
- Martini
- Car
- Sports Team
- Camping
- Golf/Sailing
- Hurricane/Lights Out

Get Creative!

**Place your order by
August 27th** call the CALS office

Support CALS!!!

Professional Development



Three Rivers Community College
CIV 150/151 Surveying I with Lab (4.5 credits)
Classes begin August 31, 2015
In-state tuition (approx.) \$850

Three Rivers Community College Civil Engineering Technologies Department is offering Surveying I for the Fall 2015 semester. The class meets M/W 2-5pm and includes weekly lab activities. The course is an introduction to survey field procedures and modern equipment, including total stations, levels, and GPS. Students will establish and run a conventional traverse and learn to perform all of the reductions utilizing a basic calculator.

Please contact the instructor, Kevin Franklin, to register or for more information at kfranklin@trcc.commnet.edu.



ALTA Land Title Survey Requirements

The American Land Title Association (ALTA) was founded in 1907 and is the national trade association and voice of the abstract and title insurance industry whose members search, review and insure land titles to protect home buyers and mortgage lenders who invest in real estate. ALTA and the American Congress on Surveying and Mapping (ACSM), now the National Society of Professional Surveyors (NSPS) established the first set of Standard Detail Requirements for Survey drawings in 1964. These instructions were established to nationally standardize the requirements for survey drawings that were to be used for ALTA loans. Updates to the requirements often occur every four-to-six years. The last recent revision took place in 2011 in conjunction with NSPS. Notable changes implemented included:

- Requirement to reference a title report on the Certificate of Survey
- Requirement to include Standard ALTA Certification
- Greater attention to offsite easements and servitudes
- Changes to the Table A items for Optional Survey Responsibilities and Specifications.

An ongoing revision is scheduled to become effective February 2016. Gary Kent, chair of the NSPS committee on the ALTA Standards has agreed to come to Connecticut on April 19, 2016, and present a full day seminar on these new changes. Reservation forms will be available in the spring but seating will be limited.

You can reserve your seat now by calling the CALS office.

Work for a cause, not for applause. Live life to express not to impress.

Support Hobbs Team



CALS Past President, member, and friend, Andy Tupper and his wife Jane, retired and moved to California a few years ago to be near their only child Karl and his wife Val. In April, Val prematurely delivered identical twin sons Finn and Hobbs Tupper. Finn passed away after only two short days and Hobbs has endured two traumatic surgeries with more to come. His original due date would not have been until July 22nd.

A family friend has designed T-shirts as a fund raiser to support the huge medical expenses that the family will have to endure.

**PLEASE REMEMBER HOBBS AND
THE TUPPER FAMILY IN YOUR
PRAYERS AND PLEASE BUY A
T-SHIRT AND CONSIDER A
GENEROUS CONTRIBUTION**



<https://www.bonfirefunds.com/support-team-hobbs>.



Work for a cause, not for applause. Live life to express not to impress.

How I spent my summer vacation...

By CALS Member Patrick Corless, L.S.



I took my wife and daughters to our nation's capital for the weekend of July 4th. Despite not agreeing with the political system as it currently exists, I feel it is important to witness and see where we are and where we've come from through the years.

People toss around the word sacrifice to excuse/blame/value the decisions made, and results of actions or inactions. One afternoon in Arlington National Cemetery can and SHOULD show people what true sacrifice is, and the countless people that truly sacrificed it all to make it possible for all of us to have the freedoms we each take for granted day by day.

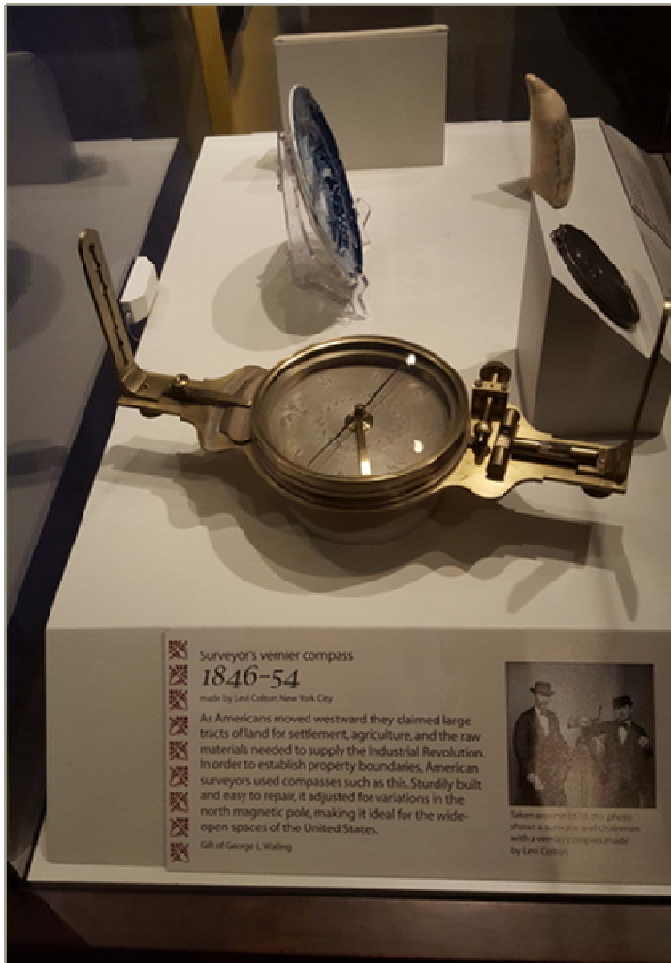
In addition, I will say I was appalled at the behavior of the various tourists from both our country and other countries with the simple lack of respect for both the facilities (Arlington, the monuments and Smithsonian campus) and each other. I feel everyone in this country should make the trip and see

the capital, but at the same time, easily half of the people there should have stayed home since it was clear they had no understanding of where they were and what they were witness to.

Work for a cause, not for applause. Live life to express not to impress.

How I spent my summer vacation continued...

By CALS Member Patrick Corless, L.S.



Compass from the Museum of Natural History in Washington, DC



Work for a cause, not for applause. Live life to express not to impress.

Surveyors Historical Society Rendezvous September 9-13, 2015, Bellingham, Washington

Don't miss your chance to be a part of the 2015 SHS Rendezvous

This event will be a great opportunity to explore the beautiful Pacific northwest with our hosts, and learn about the fascinating "Surveys and Surveyors of the Salish Sea".

A focus on the International Boundary Surveys, coupled with an adventure to San Juan Island will make this year's Rendezvous a once-in-a-lifetime experience.

The committee has planned an amazing event, with so much to see, learn and do! Great presenters, fascinating subjects and a chance to explore the area will provide a unique opportunity for all who attend the event.

Registration deadline is August 19

Surveyors Historical Society || 614-798-5257 | www.surveyorshistoricalsociety.com

CALS Auxiliary

CALS is looking for volunteers to work on the Auxiliary and support the efforts of this association.

Call Kathy at the CALS office today!



Remember:

- **Volunteers Gain New Experiences and Insights**
- **Volunteers Give Back and Helping Others**
- **Volunteers Create Connections with People**



Work for a cause, not for applause. Live life to express not to impress.

Creatures to be aware of while you're surveying
Some not real...some VERY real...

Submitted by Ed Ruchin, L.S.



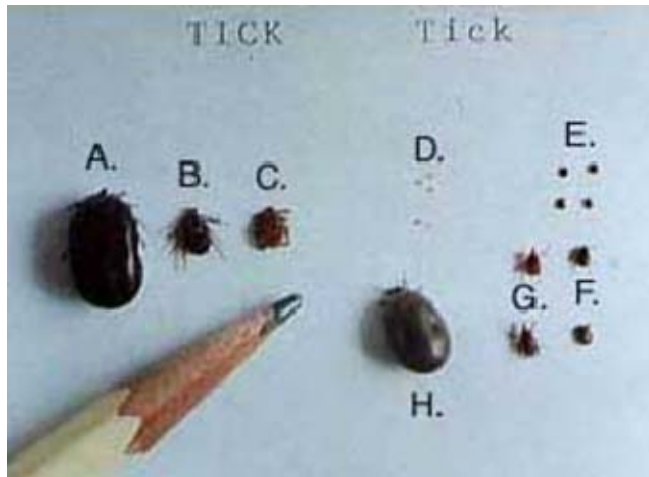
Work for a cause, not for applause. Live life to express not to impress.

Deer Ticks in Connecticut

Ticks are active in temperatures above 40 degrees. Ticks do not jump, fly or descend from trees, they just hang around waiting for a host to pass by. Tick bites don't hurt. That is why it is very important to do frequent tick checks during and after being outdoors. A daily tick check is still the best protection against Lyme disease and tick-borne illnesses. The sooner you find and remove a tick, the less likely you could be infected. Some related diseases with the tick are Lyme disease

(most related), Babesiosis, Ehrlichiosis and Rocky Mountain Spotted Fever ("RMSF").

The 2 most common ticks in the Northeast are the **Deer Tick** (Black-Legged Tick) and the **Wood Tick**(American Dog Tick).



- | | |
|--------------------|--------------------|
| Dog Ticks | Black-Legged Ticks |
| A. Engorged female | D. Larvae |
| B. Female | E. Nymphs |
| C. Male | F. Males |
| | G. Females |
| | H. Engorged female |

Did you know that an engorged adult female tick can lay up to 3,000 eggs?

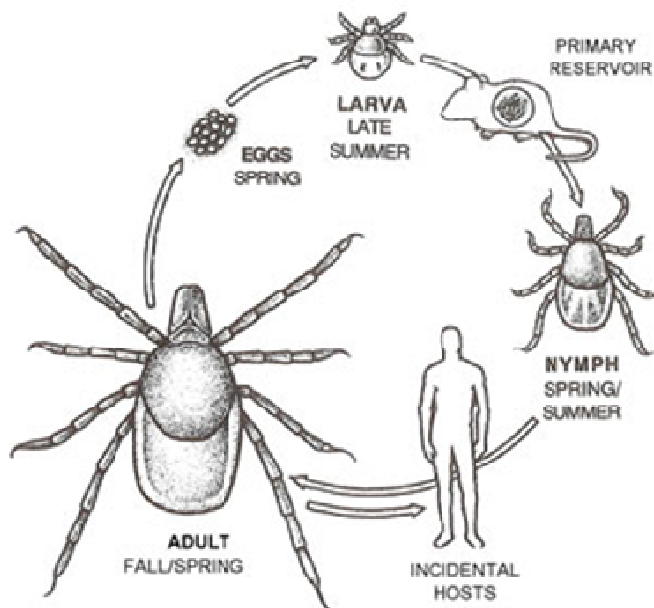


Dog ticks and black-legged ticks compared to a pencil

Picture courtesy of the Lyme Disease Foundation

Picture courtesy of the Connecticut Agricultural Experiment Station

Deer Tick Life Cycle



Tick's have four life stages: **egg, larva, nymph, and adult**. The **egg** hatches into a larva, a **larva** ("seed" tick) has six legs. The larva feeds and molts into a **nymph**, a nymph tick has eight legs and no sex differentiation. The nymph then feeds and molts into an **adult**, the adult is differentiated into male or female. The female requires a blood meal in order to lay eggs. A hard tick seeks a blood meal at, or slightly above ground level by climbing onto vegetation and using its fore-legs to feel/grab for a host. Ticks are usually found from ground level to three feet above the ground. A tick (much like the mosquito) uses carbon dioxide, scent, body heat, and other stimuli to find a host.

Work for a cause, not for applause. Live life to express not to impress.

Deer Ticks in Connecticut continued...

Peak Tick Activity Throughout the Year

Nymph (has the most **impact on public health**) - Spring and well into the summer months, we strongly recommend two applications during this time period.

Adults - Fall (September, October and November) - This is a great time for the last application to help gain control of the adult tick throughout the fall, winter and into early spring.

Tick Removal

Picture courtesy of the US Food and Drug Administration A tick's mouthparts have reverse harpoon-like barbs, designed to penetrate and attach to skin. Ticks secrete a cement-like substance that helps them adhere firmly to the host. If you find that you or your pet has been bitten by a tick, it is important to remove it properly

Do not crush, prick, or burn the tick, this may cause the tick to salivate or regurgitate infected fluids.

Do not try to smother the tick with products such as petroleum jelly or mineral oil. Ticks can store enough oxygen to complete feeding.

1. Use fine-point tweezers to grasp the tick at the place of attachment, as close to the skin as possible.

2. Gently, but firmly, pull the tick straight out, do not twist, this may break the head of the tick and leave the head imbedded in the skin. If you dislodge the head during removal, use an antibiotic on this area and consult a doctor.

3. Place the tick in a small vial labeled with your personal information for testing (if desired). You can send a tick to [The Connecticut Agricultural Experiment Station \(www.caes.state.ct.us\)](http://www.caes.state.ct.us); they can test to see if the tick is infected.

4. Wash your hands, disinfect the tweezers and the bite site.

5. Mark your calendar with the time, place of tick bite location and your general health at this time.

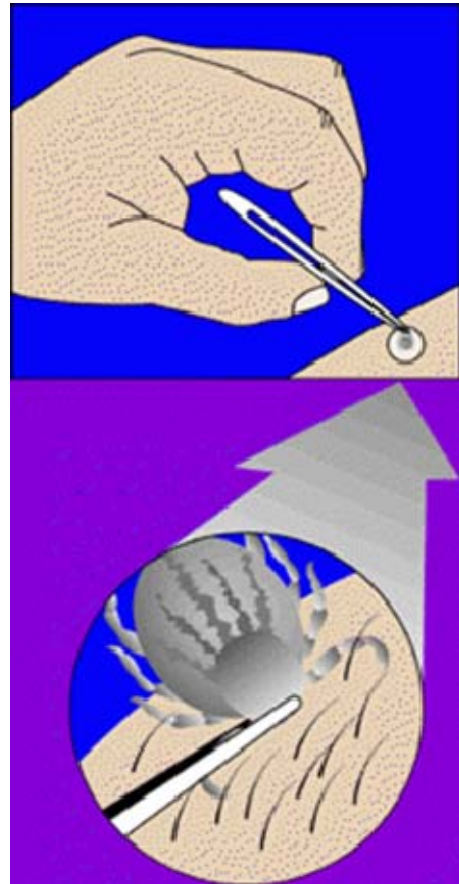
6. Call your doctor to determine if treatment is needed.

7. Watch the tick bite location for symptoms (refer to our [disease page](#) for symptoms) as well as your health.

8. If possible, have the tick identified/tested by a lab or your local health department.

Caution: Please Remember

Do not use your fingers to remove a tick or cover the tick with a petroleum jelly, nail polish, etc. This might cause the tick to inject infectious bacteria back into you or your loved ones. If the mouth parts break off during removal you should consult your physician. Children should be taught to seek adult help for tick removal.



Land Surveyor in Yellowstone Park

Taken by Adam Stefanik, son of CALS member Jeff Stefanik



Yellowstone National Park is a nearly 3,500-sq.-mile wilderness recreation area atop a volcanic hot spot. Mostly in Wyoming, the park spreads into parts of Montana and Idaho too. Yellowstone features dramatic canyons, alpine rivers, lush forests, hot springs and gushing geysers, including its most famous, Old Faithful. It's also home to hundreds of animal species, including bears, wolves, bison, elk and antelope.



August 2015

Sun	Mon	Tue	Wed	Thu	Fri	Sat
						1
2	3	4	5	6	7	8
9	10	11	12	13	14	15 Closing date for ads for the 2016 Annual Reference Book
16	17	18	19	20	21	22
23	24	25	26	27 CALs Board of Directors Meeting	28	29
30	31					



Labor Day will be celebrated on September 7, 2015

Work for a cause, not for applause. Live life to express not to impress.

Classified

Fairfield County

Immediate Need for multiple positions at a relaxed and friendly land survey firm. Positions include:

- **Entry Level Field Surveyor** (willing to train the right candidate)
- **Experienced Party Chief** with research and AutoCAD abilities.

Please send resumes to: ctsurveyjob@gmail.com

- **Survey/Field Technicians** to join the Redniss & Mead Team of Land Surveying, Civil Engineering, and Land-Use Planning professionals in a growing firm located in Fairfield County, CT. Candidates should have 3+ years experience in the surveying field and experience in the processing and preparation of all types of surveys, including boundary surveys, topographic surveys and construction layout. Knowledge of AutoCAD and Data Collection is required. Responsibilities include performing fieldwork, processing and mapping of fieldwork, coordination with clients and in-house staff. Work for this position will be on a variety of project types including residential, commercial and institutional. For consideration, please forward your resume to Lawrence W. Posson, PLS, Director of Surveying: L.Posson@rednissmead.com. We are an Equal Opportunity Employer and offer a competitive compensation package including salary, medical benefits, paid vacation, paid holidays, performance bonuses, 401K retirement plan, direct deposit, and a health club membership.
-

Pereira Engineering, LLC is an established Civil/Environmental/Land Surveying firm located in Shelton, CT and we are looking to fill the following positions:

- **Instrument man/survey technician:** We are seeking an experienced Instrument Man / Survey Technician with a minimum of five (5) years experience in all facets of land surveying from boundary surveying to construction layout. The qualified candidate must be highly-motivated and detail-oriented and must be familiar with Trimble Instruments, Trimble Data Collectors, and GNSS systems. AutoCAD Civil 3D experience a real plus! Duties include field surveying, downloading/uploading survey data, land record research, and AutoCAD drafting.
- **Civil Engineer:** We are seeking a Civil/Site Engineer experienced in various types of site development projects including residential, commercial, and municipal projects. Responsibilities include the design of site layouts, subdivisions, septic systems, storm and sanitary sewers, stormwater management systems, grading, roads, and hydrologic/hydraulic studies. Duties will include preparation of plans, specifications, and calculations as well as coordination with other design professionals and public officials. Qualified candidate must have a B.S. in Civil Engineering from an accredited engineering program and must be proficient with AutoCAD Civil 3D and other commonly used design and drainage analysis software. Candidate must also be organized, highly-motivated, and detail-oriented.

Pereira Engineering offers a very competitive salary and benefits package including Major Medical Insurance, 401(k) Profit Sharing Plan, Life Insurance including Short-Term Disability and AD&D coverage, paid Vacation, Holidays, Sick Days, and Direct Deposit for payroll.

Please email resume and salary requirements to: joe.pereira@pereiraeng.com or fax to: (203) 944-9945.

- **CAD Technician CAD Technician** with Land Surveying Experience.
Full time for Civil Engineering/Surveying company located in Greenwich, CT.
Preferred 5 years experience. Excellent salary and benefits.
For more information contact risoli@optonline.net.
-

Work for a cause, not for applause. Live life to express not to impress.

Classified

Hartford County

Vanasse Hangen Brustlin, Inc. (VHB) currently has two openings in the Wethersfield office.

- **Survey Project Manager** - The successful candidate must be knowledgeable in Land Surveying for a variety of applications, including boundary determinations, topographic surveys, utility surveys, highway surveys and subdivisions. Requires up-to-date knowledge of current technologies, and proven ability to manage land surveying projects.

Qualifications:

- 10 plus years of experience in Land Surveying
- Bachelor's degree in Land Surveying, Civil Engineering or a related field
- Connecticut Land Surveyor License preferred

- **Survey Crew Chief** -

Qualifications Include:

- 5 years of prior experience with progressive land surveying experience
- Associate degree in Land Surveying/Engineering or related field helpful, but not required
- Experience with AutoCAD is helpful, but not required
- Must have a valid driver's license and a good driving record
- Must be able to pass security screening
- Must be willing to travel for assignments outside local area
- Must be able to lift and carry up to 75 lbs.

Submit applications online: www.vhb.com. For questions about this position, contact Faith Driggers at fdriggers@vhb.com An Affirmative Action/Equal Opportunity Employer.

-
- **Survey Field Technicians** - Connecticut Land Surveying and Civil Engineering Firm located in Hartford County, is looking for highly motivated survey field technicians or survey students to join our surveying department. Candidates should have 3+ years of field experience. We will consider an equivalent educational background in processing and preparation of all types of surveys and associated engineering plans. Knowledge of Data Collection and AutoCAD is required. Civil 3D experience is a plus. Work for this position will be on a variety of project types including commercial, institutional and land title surveys. Duties will include field survey, downloading/uploading survey data, land record research and AutoCAD drafting.

For consideration, please forward your resume, course of study and available date to Robert Dahn, PLS, Managing Partner: bdahn@meehangoodin.com.

We are an Equal Opportunity Employer and offer a competitive compensation package.

-
- **Surveying Technician** – Surveying/Engineering firm in East Windsor, CT is looking for a part-time survey technician for operating surveying instruments and data collectors. Other duties may include land record research and setting monuments. The applicant must be proficient working with computers and willing to work outdoors. Please reply with a resume and cover letter to lnoble@jrusso.com. Affirmative Action/Equal opportunity employer.

Classified

Hartford County continued

- **Survey Party Chief** - Martinez Couch & Associates, LLC
Experience Level: 5 to 8 yrs.; Job Type: Full Time; Job Location: Rocky Hill, CT

Martinez Couch & Associates, LLC has a current opening for a survey party chief in field, office and research areas. The ideal candidate must have experience in boundary and topographic surveys, land records research and proficiency with AutoCAD LDD and Civil 3D. Micro station knowledge is a plus.

Job Duties: Perform surveys of municipal infrastructure such as building and facility sites, open land, development sites, roadways, bridges, streetscapes, residential and commercial developments and construction sites in urban and suburban areas.

Experience Required: Boundary and Topographic Surveys, Hydrologic Surveys, Bridges, As-built Surveys, Stakeout for Construction. Land Records Research. Robotic instrument experience is needed. Good problem solving abilities in both field and office. Ability to interact well with team, staff, clients and subcontractors. Position offers strong growth opportunities.

- **Field Technician/Instrument Operator** - Martinez Couch & Associates, LLC
Experience Level: 0 to 3 yrs.; Job Type: Full Time; Job Location: Rocky Hill, CT

Martinez Couch & Associates, LLC has a current opening for a field technician/instrument operator with 0 to 3 years experience in field. The ideal candidate should be experienced with robotic total stations, data collectors and GPS is preferred but will train the right candidate. Knowledge of various land surveying skills, while performing boundary and topographic surveys, are a plus. Ability to work in urban and rural environments is required. Computer proficiency and good organizational skills are a plus.

Salary commensurate with experience. Valid US driver's license, with a clean driving record.

Martinez Couch & Associates, LLC is a growing Land Surveying, Civil Engineering and Environmental Consulting firm based in Rocky Hill, CT. MCA offers a competitive salary and benefits package including paid vacation, medical insurance, 401(K) retirement plan with employer matching contribution, life insurance, Short-Term Disability and Long Term Disability as well as a professional working environment with opportunity for professional growth and advancement.

Contact Karen Heath at Martinez Couch & Associates kheath@martinezcouch.com
or Alan Fenrow afenrow@martinezcouch.com.

Classified

Hartford County continued

BSC Group - Join our dynamic group of Professional Surveyors, Landscape Architects, Engineers and Environmental Scientists with offices in Glastonbury, Connecticut and several Massachusetts locations including Boston, Worcester and Cape Cod. BSC Group is celebrating its 50th year anniversary with roots founded in Land Surveying and with our sight set on the future. We utilize current technologies, monitor futuristic techniques and encourage creative productivity. The company is currently in search of talented Surveyors to support on-going projects and meet our expected growth in the public and private sectors. We currently have several full time **Land Surveying** positions available in both CT and MA offices. BSC Group offers a comprehensive salary and benefit package including vacation and sick time, medical, dental, 401(k), life and disability insurance. All levels of experience are encouraged to apply.

- **Professional Land Surveyor** –Requires a broad range of skills necessary to support public and private clients, as well as to provide support to in-house civil engineering staff. Requires a BS degree with licenses in MA or CT with at least five years of supervisory experience in land title surveys, topographic/existing condition surveys, boundary surveys and subdivision work, and the ability to perform land record research of complex title histories. Project management and business development skills are highly desirable. Familiarity with the use of field equipment including conventional, robotic total stations, GPS with field to finish techniques utilizing Civil 3D and/or Carlson is desired.
- **Survey Specialist** – Full-time position to collect survey data, perform research, calculations, develop land information databases and generate survey plans utilizing field to finish techniques utilizing Civil 3D and or Carlson is desired. Assists managers with client proposals. Requires BS degree with a minimum 4 years of experience, good client relations skills and effective communication skills. LSIT is preferred.
- **Survey Party Chief** – requires excellent knowledge of field to finish survey techniques using total station and leveling equipment. Knowledge of GPS data collection is desirable. Responsibilities include performing existing condition/ topographic surveys, boundary surveys, and construction staking. A minimum of 5-6 years of field experience, valid driver's license with clean driving record, and excellent math skills. Associate's or Bachelor's degree a plus.
- **Survey Technician/Instrument Operator** – Must have a minimum of 2 years' experience using total station & electronic data collector. Experience with Carlson and Civil 3D is a plus. Candidates must have high school diploma, valid driver's license with clean driving record, and good math skills.

Please submit resume with cover letter in confidence to: Human Resources Department, BSC Group, Inc., 15 Elkins Street, Boston, MA 02127; e-mail: info@bscgroup.com; fax: 617-896-4301.

No telephone calls, no recruiters, please. BSC is an AA/EEO employer.

“We offer a signing bonus to qualified candidates”.

-
- **Survey Crew Chief/Party Chief** - Loureiro Engineering Associates, Inc. (LEA), an employee owned, full-service multi-disciplinary engineering and construction firm located in Plainville, CT. has an immediate opening in our Civil/Survey division for a Survey Crew Chief/Party Chief.

Key responsibilities are related to experience in boundary work, deed research, topographic surveys, utility mapping, and construction layout. Requirements include 3-5 years experience, field crew supervision, and good communication and team skills. GPS, Robotic Total Station, and AutoCAD experience a plus.

We offer a competitive salary and comprehensive benefits package. Apply online to Resume@Loureiro.com; by fax (860)-410-2993; or mail to- Loureiro Engineering, Attn: Human Resources, 100 Northwest Drive, Plainville, CT. 06062. EOE/AA

Work for a cause, not for applause. Live life to express not to impress.

Classified

Hartford County continued

- **Party Chief** - Martin Surveying Associates, LLC, a growing firm located in New Britain, Connecticut is seeking a party chief with the following qualifications:
 - 5+ years of experience in the role of a Party Chief.
 - Ability to perform and work as a one-person crew utilizing robotic total stations and GPS equipment.
 - Experienced in ALTA/ASCM Surveys, boundary surveys, topographic surveys and construction layout on large commercial projects. AutoCAD experience a plus.

Please send Resume to: Martin Surveying Associates, LLC, 321 Ellis Street, New Britain, CT 06051
martinsurveying148@yahoo.com

-
- **Land Survey Manager** - We are currently seeking a qualified Licensed Survey Professional(s) to lead our survey staff and our ongoing survey program. This person will play a vital role in the success of the firm and its reputation. Proven ability to lead staff, think critically and provide support to multiple teams simultaneously is required. Previous project management experience, including project development / marketing is a plus. The qualified candidate will oversee a wide variety of planning, design, and construction surveying projects.

Job Responsibilities:

- Work with project managers to plan surveying processes to support ongoing project efforts and ensure effective and timely completion of surveying deliverables.
- Coordinate with various staff members to ensure a quality product is consistently delivered to clients.
- Interface with clients and stakeholders in order to properly identify and meet surveying needs.
- Manage daily work activities of party chiefs including preparation of daily work requirements and expectations.
- Collaborate with principals, project managers, and clients to participate in project proposals and interviews as requested.

Qualifications: Must currently hold a Professional Land Surveying License.
Please respond to jdebeatham@freemancos.com at Freeman Companies.

New Haven County

- Clarence Blair Associates, Inc. (EOE) is hiring for the following field positions:
 - **Survey Crew Chief** - Minimum of five (5) years of practical experience.
 - **Instrument Man/Rod Man** - Will train as necessary.

Contact: Patrick Corless, Jr., LS
Phone: (203) 495-9950
Email: pcorless@clarenceblair.com

Classified

New Haven County continued...

- Milone & MacBroom, Inc. is a growing multidisciplinary engineering, landscape architecture, and environmental science consulting firm. Our corporate office is located in Cheshire, Connecticut, with satellite office locations in Maine, South Carolina, Massachusetts, and Vermont.

We are seeking a qualified **Survey CAD Technician** to join our Survey Department. The position provides opportunities for growth where the individual can work in the office and perform field surveys for various projects in the New England area.

The candidate will be responsible for preparing land surveying maps and drawings from survey field data using AutoCad.

The ideal qualified candidate should have two to three years of experience with proficiency in AutoCad and Microsoft office applications with the ability to learn new software programs. An Associate's degree or completion of technical trade school in CAD or a related field is required. Strong oral and written communicative skills are also required. Experience in land surveying is not required but is preferred.

The candidate should have a strong work ethic, the ability to work outdoors in a technical capacity when required, and the capacity to work individually or in a team. The successful candidate should also be willing and eager to learn and take on more responsibility.

We are also looking for talented **Survey Field Technicians (Rod Person)** to join our Survey team and perform field boundary, topographic and construction surveys for various projects in the New England area. The candidates should have zero to two years experience in land survey field work, knowledge of field instruments and proficient computer skills required. College degree and CAD experience preferred. Excellent oral and written communicative skills required.

All candidates should have a strong work ethic, enjoy working outdoors in a technical capacity, working individually or in a team, willing and eager to learn, and looking to take on more responsibility.

We offer a competitive salary, opportunity for advancement, a comprehensive benefits package, and a flexible and positive work environment. Our success depends on attracting the best talent and continuously striving to improve what we do and how we do it. There are no barriers to where your talent can lead you.

Interested applicants may submit their resume to:

Pamela Harris, Human Resources Manager Milone & MacBroom, Inc. 99 Realty Drive, Cheshire, CT 06410
pamh@miloneandmacbroom.com (203) 271-1773

Milone & MacBroom, Inc. is an Affirmative Action/Equal Opportunity Employer M/F/D/V

Classified

New Haven County continued...

- **Civil Engineer, Project Manager** - Small multi-discipline firm looking for self-motivated, energetic engineer to fill this full-time permanent position. Duties to include, residential & commercial site planning, subdivision design, storm water management and septic system design. Experience with AutoCAD, and the public approval process required.

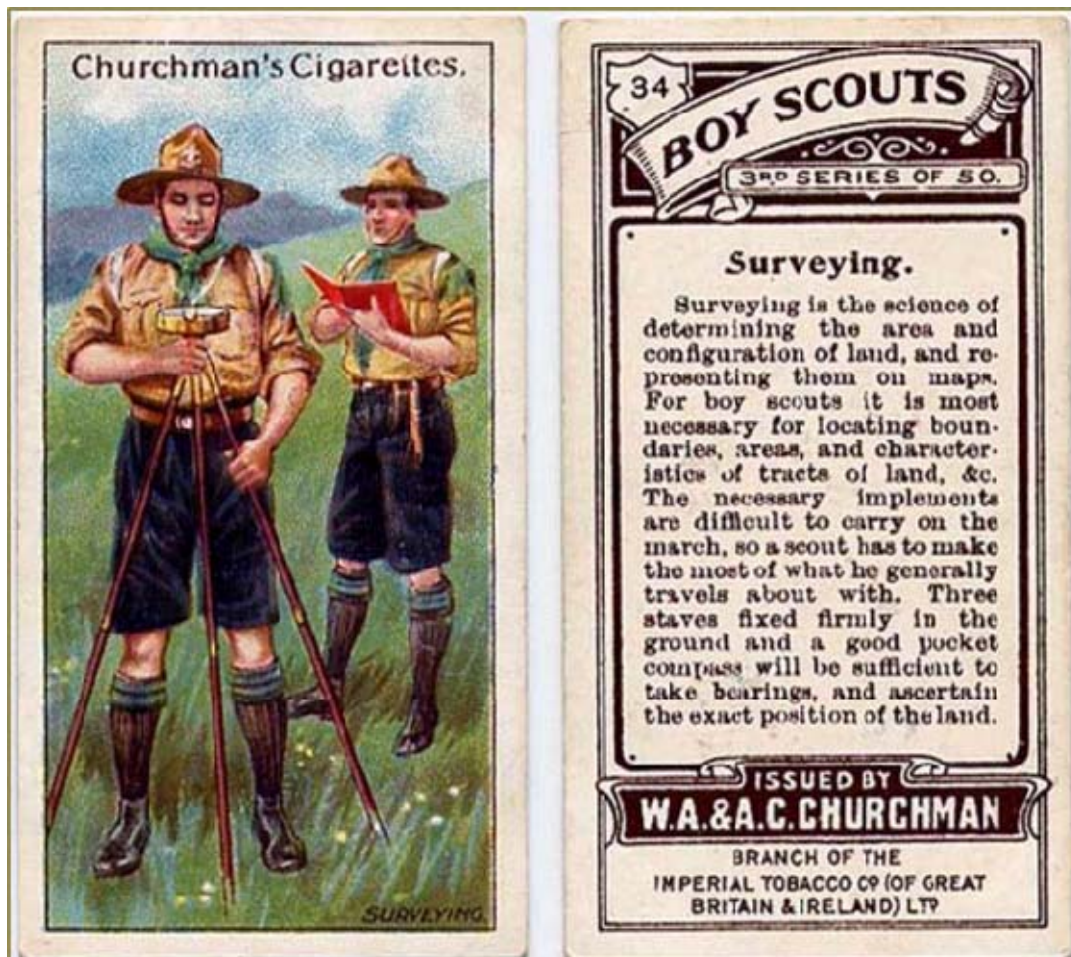
Career oriented individual willing to put themselves out there. Night commission meetings as well as marketing for the firm will be required. This position offers exposure to a diverse workload that provides for excellent professional development with a future.

- **Survey Technician** - Small multi-discipline firm looking for self-motivated, energetic survey technician to fill our full-time permanent position. Duties will include maintenance and upkeep of survey instruments and associated equipment. Experience in operating field instruments, data collection and basic computer skills are preferred.

A survey technician should possess a strong work ethic, enjoy working outdoors, working individually or in a team and a desire to learn.

This position offers exposure to a diverse workload that provides for excellent professional development with a future. Come join a great team at Godfrey-Hoffman. All inquiries will be kept completely confidential.

Respond to ahoffman@godfreyhoffman.com



Work for a cause, not for applause. Live life to express not to impress.



PLEASE SUPPORT YOUR SUSTAINING MEMBERS

**BEARINGSTAR
INSURANCE GROUP**
Home, Auto & Other
Personal Insurance Needs
Avon, CT

Evan Cooper - 800-300-4180
evan.cooper@bearingstar.com

BERNTSEN INTERNATIONAL
Survey Markers & Monuments
Madison, WI

Tim Klaben-800-356-7388
tklaben@berntsen.com

BUNCE INDUSTRIES, LLC
Surveying Instruments
& Supplies

Newington, CT
Paul Morin - 860-388-9008
pmorin@bunce.com

CAMILLERI & CLARKE
An Affiliate of SMITH
BROTHERS INSURANCE

Glastonbury, CT
Robert D. Camilleri - 860-430-3306
rcamilleri@camillericlarke.com

CARLSON SOFTWARE
Surveying Software

Agawam, MA
John O'Brien - 800-283-0023
www.carlsonsw.com
jobrien@carlsonsw.com

DESIGN PRODUCTS, CO.
Engineering Equipment
& Supplies

Newington, CT
Tim Lagosh - 860-666-8573
tim@dpcct.com

EASTERN TOPOGRAPHICS
Aerial Photogrammetry Services

Wolfeboro, NH
Wayne Kelloway - 603-569-2400
wkelloway@e-topo.com

FENNER & ESLER AGENCY
Professional Liability for
Engineers & Surveyors

Oradell, NJ
Timothy P. Esler - 201-262-1200
tpesler@gmail.com

**GEOMAPS
INTERNATIONAL**
Aerial Photogrammetry Services

Bethpage, NY
William Crawbuck - 516-827-9100
billc@geomapsintl.com

**GOLDEN AERIAL
SURVEYS**

Aerial Photogrammetry
Services
Waterbury, CT
Lenny Johnson - 203-426-3322
ljohnson@goldenaerialsurveys.com

**KEYSTONE PRECISION
INSTRUMENTS**

Surveying Instruments
& Supplies
Eric Beiler, CT Sales Rep. -
860-558-5700
ebieler@keypre.com
Paul Carver, Manager - 888-443-9840

MAINE TECHNICAL SOURCE
Surveying Instruments
& Supplies

Woburn, MA
Mike Gage - 800-322-5003
mgage@maintechnical.com

MW FINANCIAL GROUP
Long Term Care
& Disability

Farmington, CT
John Carbone - 860-677-2600 x129
john_carbone@mwfinancial.com

**REYNOLDS STRATEGY
GROUP**

Counselors at Law
West Hartford, CT
Kevin Reynolds - 860-308-2388
kreynolds@rsllc.com

SUPERIOR INSTRUMENT
Surveying Instruments
& Supplies

Milldale, CT
Mike Jiantonio - 888-852-7377
mjiantonio@superiornetwork.com

TRIMBLE

Surveying Equipment
Westminster, CO
Kelly Liberi
www.trimble.com
Kelly_liberi@trimble.com

WADDELL & REED
Financial Services

Manchester, CT
Matt Peak - 860-432-8111
peak@wradvisors.com

WSP GROUP

Mult-disciplinary
Engineering Services
Ted Covill - 508-248-1970
www.wspgroup.com
ted.covill@wspgroup.com