



The Connecticut Surveyor

Volume 19, Issue 12

Connecticut Association of Land Surveyors - 78 Beaver Road, Wethersfield, CT 06109

CALS Officers & Directors would like to wish you, your family, and your loved ones and very kind and peaceful holiday on which you can reflect your many blessings.



Inside this issue:

2015 Legislation	3
Professional	4
NSPS Fall Convention	6
2015 Trig-Star	8
Classified	10
Calendar	11

www.ctsurveyors.org

email: kathy@ctsurveyors.org

tele. 860-563-1990

Providing high quality digital topographic mapping - est.1977
www.e-topo.com/map/



ASPRS



CALS



MSLS



MALSCE



NHLSA



NYSAPLS



RISPLS



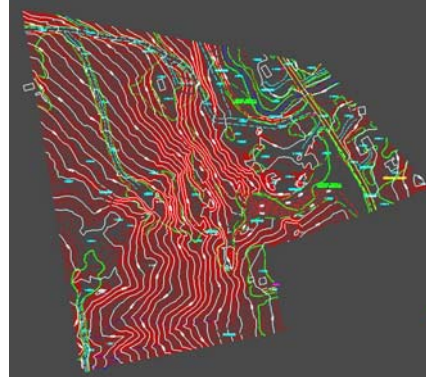
VLSL

One icon represents 325 photo centers - click icon nearest to area of interest. Continue to select until low resolution aerial image appears. Fast alternative (Top Left) - enter address- hit Go!
 All images can be panned, zoomed, and downloaded for free.

LOW ALTITUDE IMAGERY ONLINE

Over 200,000 images - Low resolution scans represent high quality aerial photos captured with a USGS calibrated cartographic camera suitable for detailed engineering level mapping (1"=40'/2' DTM).

Download free imagery or submit a topographic mapping request for proposal (RFP) www.e-topo.com/map/



TIGHT BUDGET?

Every proposal includes our **LOW PRICE GUARANTEE.**
 See website for complete details.

**SPEC FLIGHTS - NO UPFRONT COST
 (15MAR-20APR)**



CALS 2015 Legislation

Legislative Chairmen Robert Dahn and legislative liaison Reese Roberts recently attended a meeting with the American Council of Engineering Companies of Connecticut (ACECC) regarding their upcoming legislative proposal for 2015. The ACECC proposal will include: the package of changes long sought by the Connecticut Board of Examiners for Professional Engineers and Land Surveyors; the creation of a Professional Engineer License with a Structural Endorsement; and a requirement that Professional Engineers complete twelve hours of continuing education per year which are to be declared on their annual license renewal form.

Barring any unforeseen changes, the legislative committee will be recommending to the CALS Board of Directors, that CALS support passage of this proposal.

CALS Board of Directors has voted to seek to have the ACEC include in their proposal, a requirement for licensed land surveyors in Connecticut to complete 8-hours of continuing education credits per year in order to maintain their license.



Stolen Equipment

On November 6, 2014, a Topcon Robotic Total Station, model numb. 8205A was stolen on Averyll Avenue in Wolcott, CT.

If you have any information to share please contact Todd at 860-528-4880.

Thank you.

NSPS stolen equipment registry

You may not be aware that NSPS offers a registry for any NSPS member to use for listing stolen equipment, and for members to check if they are approached to purchase equipment from unknown sources. Anyone wishing to utilize the NSPS registry can access it by using the link, <http://www.nspc.us.com/index.cfm?fuseaction=Page.viewPage&pageId=676&parentID=525&nodeID=2>.

CALS 2015 Annual Books were handed out at the CALS Annual Meeting on October 31, 2014. The book is filled with interesting articles and resource material.

If you did not get your copy at the Annual Meeting you can stop by the CALS office.

The expense of postage has become very expensive but if you would like us to mail your copy to you please send us \$4 to cover postage and we will get your copy right in the mail to you.

Professional Development

On December 5, 2014, CALS sponsored the first annual seminar on "Ethics for the Professional Engineer and Land Surveyor", presented by Jay Doody PS&PE. Participants learned the history of professional ethics, focusing on engineers and land surveyors. The class reviewed actual disciplinary actions taken by New York and the New England Boards of Registration, and took part in resolving ethical scenarios, using ethics rules from our national professional societies and state boards of registration. The seminar helped to clarify for the participants the differences between violations of codes of ethics, rules on minimum standards and laws on negligence in carrying out our professional responsibilities as land surveyors and civil engineers.

The hallmark of a profession is its responsibility to represent itself through a professional association and through appointed professionals on the state board of registration, who police the profession. As professionals we are obligated to know the law, including ethical laws we have created for our profession. Further, we are obligated to train our own profession in better understanding these laws. This seminar fulfills a need in our profession, and will be offered yearly for the benefit of CALS members who are professional land surveyors and engineers, as well as technicians.

John J. Doody, Chairman, CALS Professional Development Committee

UPCOMING SEMINARS FOR 2015

" The Creation, Discontinuance and Abandonment of Roads"

Presented by James Sakonchick, PE&LS, President
Kratzert, Jones & Associates, Milldale, CT
Wednesday, February 18, 2015, 8:30am-noon
ITBD CCSU, New Britain, CT Cost \$100

"Connecticut Town Boundaries"

Moderated by John Doody, PS&PE
The history, research resources and case studies of town boundaries.
Thursday, March 19, 2015, 8:30am-3:30pm
ITBD CCSU, New Britain, CT Cost \$200

Continued on page 5...

Professional Development

Connecticut Land Surveying Certificate Courses for Spring 2015

The Land Surveying Certificate program for academic achievement in land surveying is offered by Charter Oak State College, www.charteroak.edu. Isn't it time for you to start working on your land surveying certificate now? The following courses of interest are offered for Spring, 2015.

Charter Oak State College Online Courses:

All courses have a registration deadline of January 14, 2015 courses start January 20, 2015.

These courses are offered online. Course cost with book about \$1,000 plus book cost.

EGR 410, Boundary Law, 15 weeks. Boundary law, history of surveying, public land system, legal foundations, evidence, original surveys, water boundaries, title search, evidence, professional issues. 25% of the FS and 50% of the PS examination consists of boundary law questions.

PLG 210, Legal Research & Writing, 8 weeks. Students will learn the essential skills of legal research, writing and analysis in this course. They will learn to use the traditional book-based methods of legal research as well as electronic research systems such as Westlaw and/or LexisNexis. Surveyors are expected to know the law. This paralegal course will teach you how to find the law and how to evaluate and weigh legislative laws against court decisions. You will also learn how to organize your material to frame your legal research.

Central Connecticut State University, Civil Engineering Department

Course starts January 18, 2015. Cost is \$1,333 plus book cost.

CE 458 Introduction to GPS & GIS Mapping, 13 weeks

Saturdays, 8am-10:40am

This course explores in detail the elements of GPS operations and systems, coordinate systems and hands on experience using GPS to collect data and compute results. The class project will utilize AutoCAD Map 3D to process GPS data collected in the field. (3 openings)

For more detailed information on how to register for these courses, please contact Jay Doody at jjdoody@snet.net.



Three Rivers Community College, located in Norwich, offers an accredited A.S. program in both civil and environmental engineering technologies as well as a 27.5-credit Survey Technician Certificate.

Three Rivers has a full range of conventional survey equipment, survey-grade GPS receivers, GIS and AutoCAD software. Formerly Thames Valley Tech, the college has recently been fully renovated and the survey lab in particular has state of the art technology and projectors. The plan of study for the program is attached for reference.

Survey II is being offered this spring, and there are still seats available for both the lecture and lab sessions. Students do not necessarily have to take Survey I prior to taking Survey II.

For more information contact Kevin Franklin at kfranklin@trcc.commnet.edu.



NSPS Fall Convention

Overland Park, Kansas – October 22-24 - Kansas and Missouri Joint Conference

The fall meeting of NSPS began with an inspiring presentation by Congressman Yoder of Kansas, who is a member of the House Appropriations Committee. As you may have read in the NSPS News and Views he was and is a strong supporter for our cause during the Light Squared issue just a year or two back. I say inspiring because he was comparatively young, well spoken, willing to admit some of the short comings in congress at this time – but also provided some points of reference that were considerably more positive about the workings of Congress that we tend not to hear from the general media. The specifics of which are not necessarily germane to this report and probably still open to debate. However, I would like to think it was a small example of the increased interest our elected officials will take in our reconfigured organization of over 16,000 members!!

NSPS has been able to schedule meetings as of late, whereby we partner with state organizations during their conference to facilitate communication and enable the membership to participate in ours. At this conference I thought we were well integrated in their schedule and a few of their state members participated in our committee and general meeting as guests. During the 1st week of October in 2015 we will be in Ohio. It would be nice to see a joint conference in the northeast at some point in the future.

The 100% program continues to surpass all expectations. At present West Virginia, Arkansas and California have not committed to the program. It is my understanding that at least 2 of these are related to internal issues versus a general belief that it is not a good proposition for their membership.

We have done many things over the years that have a direct benefit to our professional and student level members, but very little for our associate level members. The CST (Certified Survey Technician) committee had previously suggested that incorporating NSPS membership with the CST Annual Certification (2 for the price of one) would be beneficial to NSPS by increasing membership and enhance the CST program overall. During the fall meeting we passed a motion to do exactly that. CST Annual Certification and NSPS Associate Membership can be had for \$40, as long as the CST maintains an Associate Membership with their state organization. We currently have ~1400 who maintain their certification, but only 46 maintain NSPS (non-student) memberships.

General Business and Motions Approved by the NSPS Board Of Directors:

- Develop NSPS Model Law for the new NGS Datum with a projected roll out in 2022 (Replaces SPC1983 and NAVD1988)
- NSPS Education Committee will perform a feasibility study to investigate the creation of an NSPS on-line, peer reviewed Applied Geomatics Journal
- Replace the existing NSPS education policy with the following language:
“The official position of the National Society of Professional Surveyors shall be that a Bachelor’s Degree in Surveying, Surveying Engineering, or Surveying Engineering Technology be the minimum educational requirement for licensure as a Land Surveyor in all jurisdictions.
- Create a public relations materials and idea section on the NSPS website
- Develop an implementation plan for the proposed NSPS & AAGS Geodetic Certification Program
- Final approval of the NSPS Strategic Plan by the Board of Directors, although it is understood that it will be a dynamic document for the foreseeable future.

Continued on page 7...

NSPS Fall Convention continued...

- We continue to perform housekeeping on various bylaws and policies related to the new 100% program. We voted to eliminate Area Directors from the NSPS BoD and bylaws. You may recall that the Board of Governors will cease to exist after the spring meeting of 2015.
- The Treasurer and Secretary positions of NSPS will now be fulfilled with 2 people rather than 1.
- Direct the Public Relations Committee to create an award and award criteria for the best Public Relations project of the year for the Profession of Land Surveying

The NSPS Spring Meeting will be held in Washington D.C. with the MAPPS organization (Photogrammetry, Mapping & Geo-Spatial), NGS and DHS(Department of Homeland Security).

“ This is our first step in attempting to create an annual conference that we hope will ultimately include a broad group of geospatial organizations.” Curt Sumner

Thank you for the honor and pleasure of representing CALS at NSPS, it has been an exciting year and I look for 2015 to be even better.

Happy Holidays to you all.
--Rick Howard
NSPS Director - Connecticut



Every monument has a story...

and every story has a history...

LASTING IMPRESSIONS, A Glimpse Into the Legacy of Surveying

is a beautiful book filled with timeless stories of monuments
that mark the past, present and future.

Perfect for surveyors, engineers, history buffs, students, educators, geocachers and good friends.



The 192-page full-color, hardcover book is a fresh way to look at the history of America.

This book embraces the adventures and challenges of the surveying profession, past and present.

Lasting Impressions is a treasure to own and a great gift for all who appreciate our heritage.

Only \$29.95 + shipping for CALS Members. Call to order today 860-563-1990.

The unselfish effort to bring cheer to others is the beginning of a happier life for ourselves.

TRIG  **STAR**

Trig-Star is an annual competition sponsored by the National Society of Professional Surveyors and you, the local sponsor. The program goal is to recognize and stimulate the best students of mathematics from among school districts across the United States utilizing a competition with awards. The purpose of the Trig-Star program is:

- To promote excellence in the mastery of mathematics in high school;
- To honor high school students who have demonstrated their superior skill among classmates at the local, state and national levels;
- To acquaint high school students with the use and practical applications of mathematics in the surveying professions;
- To build an awareness of surveying and mapping as a profession among mathematically skilled high school students, career guidance counselors, and high school math teachers.

Your assistance is critical to ensuring the success of the Trig-Star program. Trig-Star can be a tremendous public relations event for the surveying and mapping profession. High school students, their parents, teachers, and the public see first-hand some of the work undertaken by surveying and mapping professionals, and the concern of the profession for rewarding academic achievement and teaching excellence. Please consider becoming a Trig-Star sponsor.

The Trig-Star contest can be a good way to introduce high school students to available surveying and mapping college degree programs. Please encourage those students who may have any interest in information on careers and scholarships to check the box on the cover of the contest form.

Trig-Star local contest results must be submitted through the online form www.nsp.us.com - scroll over NSPS Trig-Star Program and select Contest Report Forms .

Each state is responsible for running its own state Trig-Star contest in order to choose a state Trig-Star champion who will compete in the National Trig-Star competition. Please contact the state Trig-Star coordinator about the program in your state. A list of State Coordinators is available on the Trig-Star web site. In addition to any awards at the local and state level, the State Trig-Star will be eligible to compete for \$2,000, \$1000, and \$500 national prizes. In addition the Teaching Excellence Awards provide cash awards for the teachers of the national winners.

With your assistance we can maximize the exposure of the surveying and mapping profession to the next generation and create a strong positive image of our profession. The Trig-Star endowment fund was created to insure the future of our scholarship program and provide increased benefits. Please consider sponsorship of the endowment fund with a tax-deductible gift. More information about the fund and Trig-Star can be found on the web at www.trig-star.info. Thank you for your assistance and support of Trig-Star.

Gerald Juarez, NSPS Trig-Star Chair
National Society of Professional Surveyors
5119 Pegasus Court, Suite Q, Frederick, MD 21704
Phone: 240-439-4615 Fax: 240-439-4952

Download a TrigStar Packet here: <http://www.nsp.us.com/document/docWindow.cfm?fuseaction=document.viewDocument&documentid=1241&documentFormatId=1263>

The Connecticut Trig-Star Chairman is Rick Martel martelnorthstar@aol.com.





A High School Trigonometry Skill Awards Program
 Administered by the National Society of Professional Surveyors

★★STATEWIDE SPONSORSHIP APPLICATION FORM★★

The TRIG-STAR contest allows NSPS State Affiliates to sponsor unlimited TRIG-STAR contests by operation under a yearly state site license granted by NSPS. A local sponsor is still needed for each participating High School to administer the tests. Only one TRIG-STAR contest will be allowed per participating local high school per year. The state affiliates must apply to NSPS on this application form to be eligible for a site license. A package containing TRIG-STAR contest instructions, a TRIG-STAR test problem, and a sample TRIG-STAR news release will be delivered in camera ready format for the state affiliates to copy and distribute within the state at the state affiliates discretion. The local TRIG-STAR contest sponsors will be responsible for making all the local arrangements. The state affiliate society will determine the state TRIG-STAR contest winner who is eligible to compete in the NSPS National Trig-Star Contest.

STATE _____ DATE _____

AFFILIATE (SPONSOR) _____

State TRIG-STAR Coordinator _____

Mailing Address _____

City _____ State _____ Zip _____

Phone Number () _____ Fax Number () _____

Email address _____

TRIG-STAR contest materials will be sent to the State TRIG-STAR coordinator.

Sponsorship fee: \$500.00

Please send my packets: email mail

Number of packets by mail: 5 10 15 20 Other _____

Make checks payable to NSPS TRIG-STAR or pay by Visa, MC, Amex, or Discover

Card # _____

Security Code _____ Expiration Date ____/____/____ Billing Zip Code _____

Name on Card _____ Signature _____

Email Address for Receipt _____

Send To: TRIG-STAR, 5119 Pegasus Court, Suite Q, Frederick, MD 21704
 Phone: 240-439-4615 * Fax: 240-439-4952

Classified

Job Openings -

National Grid is looking for a Surveyor/Sr. Surveyor to:

- Provide lines of business with high-quality, accurate, and timely land surveying services.
- Coordinate and direct land surveying activities to assist in the establishment of transmission and distribution facilities, substations, buildings, and other facilities company-wide.
- Interpret land and property records and documents for corporate clients.
- Requirements include: current registration as a Land Surveyor in the State of MA or RI preferred.

For a full description, please visit nationalgrid.com or send resume to Rosa.simmons@nationalgrid.com

For Sale -

Eastern/Central CT Surveying Firm with many years of records and maps; vehicles; office and field equipment, for sale. Present office site also available. Contact Kathy at CALS office.

Looking for Position -

- CALS member with BS degree from Southern CT State College.
- Extensive experience as a Senior Survey Technician.
- Located in New Haven County.
- Willing to travel.
- References upon request.

Call the CALS office for more information. Refer to #2014-10

Hartford County -

Party Chief-Martin Surveying Associates, LLC is a growing firm located in New Britain, Connecticut is seeking a party chief with the following qualifications:

- 5+ years of experience in the role of a Party Chief.
- Ability to perform and work as a one-person crew utilizing robotic total stations and GPS equipment.
- Experienced in ALTA/ASCM Surveys, boundary surveys, topographic surveys and construction layout on large commercial projects.

AutoCAD experience a plus.

Please send Resume to: Martin Surveying Associates, LLC
321 Ellis Street, New Britain, CT 06051 martinsurveying148@yahoo.com



December 2014

Sun	Mon	Tue	Wed	Thu	Fri	Sat
	1 CALS 2015 Dues Notices are mailed.	2	3	4 CALS BOD Meeting	5 Professional Ethics Seminar	6
7 Pearl Harbor Day	8	9	10	11	12	13
14	15	16 Hanukkah begins at sundown	17	18	19	20
21 Winter begins	22	23	24	25 Christmas	26	27
28	29	30	31 New Year's Eve			



The unselfish effort to bring cheer to others is the beginning of a happier life for ourselves.



PLEASE SUPPORT YOUR SUSTAINING MEMBERS

**BEARINGSTAR
INSURANCE GROUP**
Home, Auto & Other
Personal Insurance Needs
Avon, CT
Evan Cooper - 800-300-4180
evan.cooper@bearingstar.com

BERNTSEN INTERNATIONAL
Survey Markers & Monuments
Madison, WI
Tim Klaben-800-356-7388
tklaben@berntsen.com

BUNCE INDUSTRIES, LLC
Surveying Instruments
& Supplies
Newington, CT
Paul Morin - 860-388-9008
pmorin@bunce.com

CAMILLERI & CLARKE
An Affiliate of SMITH
BROTHERS INSURANCE
Glastonbury, CT
Robert D. Camilleri - 860-430-3306
rcamilleri@camillericlarke.com

CARLSON SOFTWARE
Surveying Software
Agawam, MA
John O'Brien - 800-283-0023
www.carlsonsw.com
jobrien@carlsonsw.com

DESIGN PRODUCTS, CO.
Engineering Equipment
& Supplies
Newington, CT
Tim Lagosh - 860-666-8573
tim@dpcct.com

EASTERN TOPOGRAPHICS
Aerial Photogrammetry Services
Wolfeboro, NH
Wayne Kelloway - 603-569-2400
wkelloway@e-topo.com

FENNER & ESLER AGENCY
Professional Liability for
Engineers & Surveyors
Oradell, NJ
Timothy P. Esler - 201-262-1200
tpesler@gmail.com

**GEOMAPS
INTERNATIONAL**
Aerial Photogrammetry Services
Bethpage, NY
William Crawbuck - 516-827-9100
billc@geomapsintl.com

**GOLDEN AERIAL
SURVEYS**
Aerial Photogrammetry
Services
Newtown, CT
Lenny Johnson - 203-426-3322
ljohnson@goldenaerialsurveys.com

**KEYSTONE PRECISION
INSTRUMENTS**
Surveying Instruments
& Supplies
Eric Beiler, CT Sales Rep. -
860-558-5700
ebieler@keypre.com
Paul Carver, Manager - 888-443-9840

MAINE TECHNICAL SOURCE
Surveying Instruments
& Supplies
Woburn, MA
Mike Gage - 800-322-5003
mgage@maintechnical.com

MW FINANCIAL GROUP
Long Term Care
& Disability
Farmington, CT
John Carbone - 860-677-2600 x129
john_carbone@mwfinancial.com

**REYNOLDS STRATEGY
GROUP**
Counselors at Law
West Hartford, CT
Kevin Reynolds - 860-308-2388
kreynolds@rsllc.com

SUPERIOR INSTRUMENT
Surveying Instruments
& Supplies
Milldale, CT
Mike Jiantonio - 888-852-7377
mjiantonio@superiornetwork.com

TRIMBLE
Surveying Equipment
Westminster, CO
Susan Hall - 303-635-8419
www.trimble.com
susan_hall@trimble.com

WADDELL & REED
Financial Services
Manchester, CT
Matt Peak - 860-432-8111
peak@wradvisors.com

WSP GROUP
Mult-disciplinary
Engineering Services
Ted Covill - 508-248-1970
www.wspgroup.com
ted.covill@wspgroup.com